

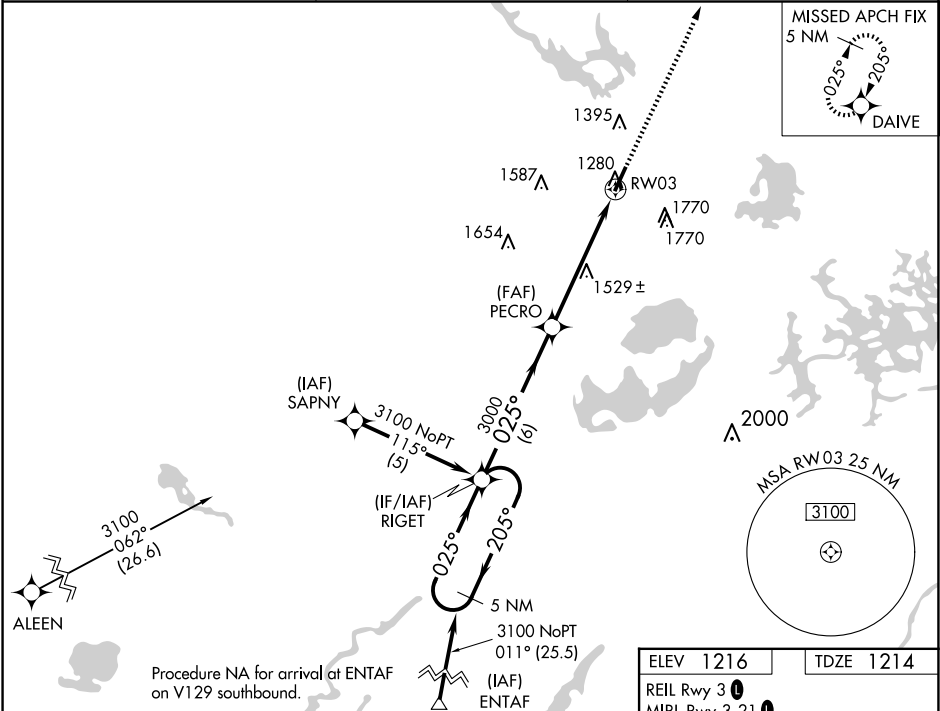
WAAS CH 90400 W03A	APP CRS 025°	Rwy Idg TDZE Apt Elev	5002 1214 1216
--	------------------------	-----------------------------	---

RNAV (GPS) RWY 3

SAWYER COUNTY (HYR)

RNP APCH.	For uncompensated Baro-VNAV systems, LNAV/VNAV NA below -22°C or above 54°C. Rwy 3 helicopter visibility reduction below ¾ SM NA. Circling NA to Rwy's 16 and 34.	MISSED APPROACH: Climb to 3300 direct DAIVE and hold.
-----------	--	---

ASOS 118.4	MINNEAPOLIS CENTER 126.45 276.4	UNICOM 122.8 (CTAF) 0
----------------------	---	---------------------------------



5 NM Holding Pattern				
VGSI and RNAV glidepath not coincident (VGSI Angle 3.00/TCH 34).				
RIGET				
3100 ← 205° 025° →				
GP 3.00° TCH 40				
3000				
6 NM				
3.7 NM				
1.7 NM				
3300 DAIVE				
*LNAV only.				
RW03				
*1.7 NM to RW03				
CATEGORY				
A				
B				
C				
D				
LPV DA				
1514-1 300 (300-1)				
LNAV/VNAV DA				
1916-2½ 702 (700-2½)				
LNAV MDA				
1780-1 566 (600-1)				
1780-1½ 566 (600-1½)				
1780-1¾ 566 (600-1¾)				
CIRCLING				
1860-1 644 (700-1)				
2060-1¼ 844 (900-1¼)				
2120-2¾ 904 (1000-2¾)				
2120-3 904 (1000-3)				

