

LOC/DME I-HTY	APP CRS	Rwy ldg	5002
108.5	205°	TDZE	1216
Chan 22		Apt Elev	1216

ILS or LOC RWY 21

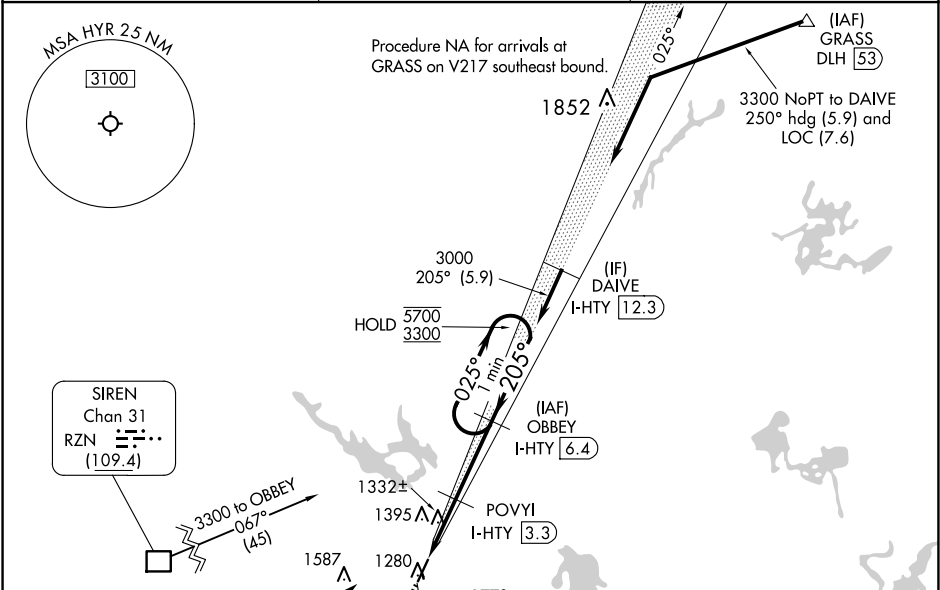
SAWYER COUNTY (HYR)

From RZN DME: RNAV 1-GPS required.  
DME required.

MALSR

MISSED APPROACH: Climb to 2200 then climbing right turn to 3300 on heading 060° and I-HTY northeast course to OBBEY/ I-HTY 6.4 DME and hold.

ASOS 118.4	MINNEAPOLIS CENTER 126.45 276.4	UNICOM 122.8 (CTAF) 0
---------------	------------------------------------	--------------------------



ELEV 1216 TDZE 1216

205°

REIL Rwy 3 0  
MIRL Rwy 3-21 0

2200	3300	I-HTY NE crs	OBBEY I-HTY 6.4	OBBEY I-HTY 6.4	One Minute Holding Pattern
*LOC only.		*I-HTY 2	POVYI I-HTY 3.3	3000	025° → 5700 ← 205° 3300
		I-HTY 0.9			GS 3.00° TCH 42'
		1.1 NM	1.3 NM	3.1 NM	

CATEGORY	A	B	C	D
S-ILS 21		1518-¾	302 (400-¾)	
S-LOC 21		1600-¾	384 (400-¾)	
CIRCLING	1860-1 644 (700-1)	2060-1¼ 844 (900-1¼)	2120-2¾ 904 (1000-2¾)	2120-3 904 (1000-3)

EC-3, 07 AUG 2025 to 04 SEP 2025

EC-3, 07 AUG 2025 to 04 SEP 2025