

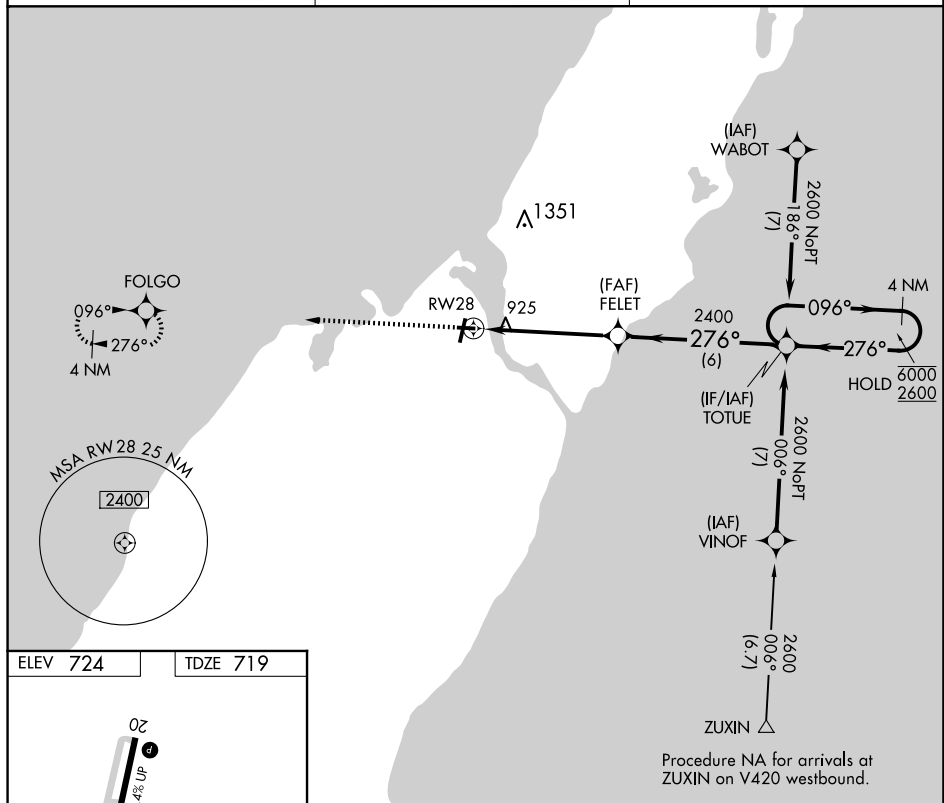
22195

RNAV (GPS) RWY 28

DOOR COUNTY CHERRYLAND (SUE)

MISSED APPROACH: Climb to 2600 direct FOLGO and hold.

T Rwy 28 helicopter visibility reduction below $\frac{3}{4}$ SM NA.

UNICOM
122.7 (CTAF) **L**

Procedure NA for arrivals at ZUXIN on V420 westbound.

10

20

0.4% Up

3199 X 75

28

276° to RW28

RW28

4599 X 75

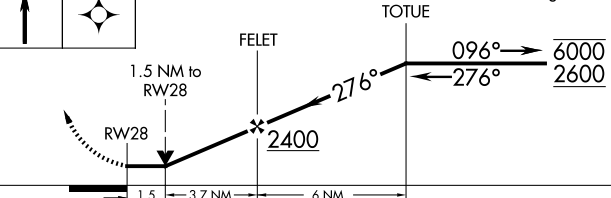
2

RLLS Rwy 2

REIL Rws 2, 10, 20 and 28

MIRL Rws 2-20 and 10-28

2600	FOLGO	Visual Segment - Obstacles.	4 NM Holding Pattern
------	-------	-----------------------------	-------------------------



CATEGORY	A	B	C	D
LNAY MDA	1240-1 521 (600-1)		1240-1½ 521 (600-1½)	NA
C CIRCLING	1280-1 556 (600-1)		1280-1½ 556 (600-1½)	NA

DOOR COUNTY CHERRYLAND (SUE)
RNAV (GPS) RWY 28

EC-3, 07 AUG 2025 to 04 SEP 2025