

STURGEON BAY, WISCONSIN

AL-5409 (FAA)

22195

WAAS CH <b>86304</b> <b>W20A</b>	APP CRS <b>196°</b>	Rwy Idg <b>4599</b> TDZE <b>724</b> Apt Elev <b>724</b>
--	------------------------	---

# RNAV (GPS) RWY 20

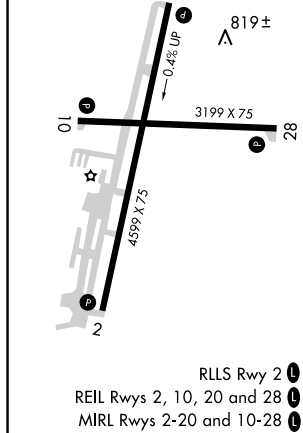
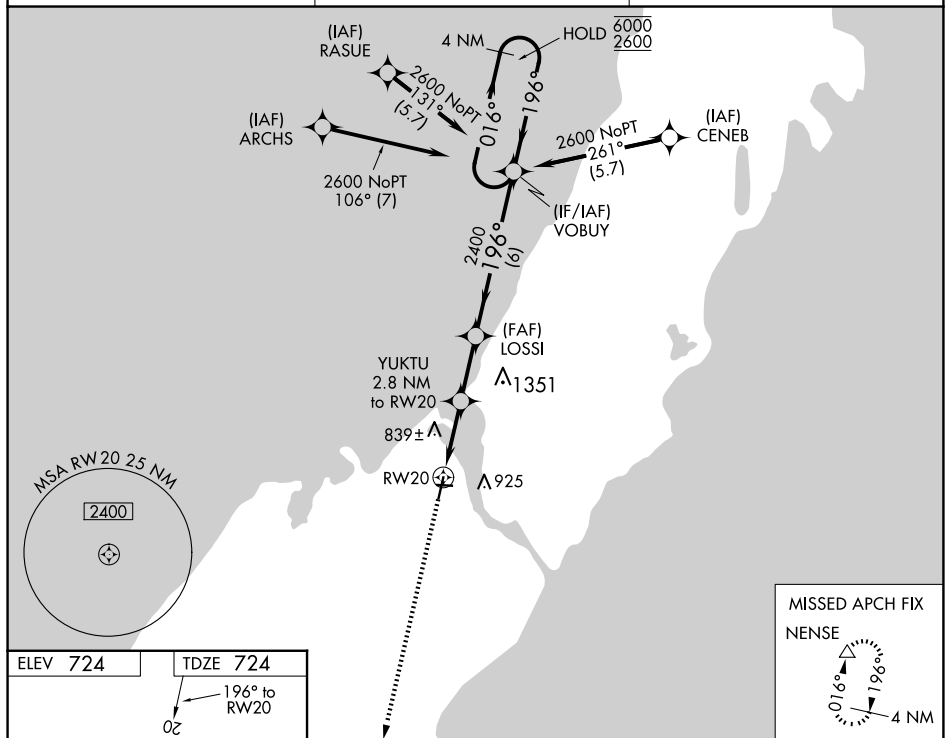
## DOOR COUNTY CHERRYLAND (SUE)

RNP APCH - GPS.

**T** For uncompensated Baro-VNAV systems, LNAV/VNAV NA below -16°C or above 54°C.

**MISSED APPROACH:**  
Climb to 3500 direct  
NENSE and hold.

AWOS-3PT <b>128.325</b>	GREEN BAY APP CON ★ <b>119.25 338.2</b>	UNICOM <b>122.7 (CTAF) ①</b>
----------------------------	--	---------------------------------



3500 ↑		NENSE △		<div><div><div>YUKTU 2.8 NM to RW20</div><div>LOSSI 2400</div><div>VOBUY</div></div><div><div>1.1 NM to RW20</div><div>1640</div><div>2400</div><div>196°</div><div>016°</div><div>196°</div><div>6000</div><div>2600</div><div>GP 3.00° TCH 46</div></div><div><div>1.1 NM</div><div>1.7 NM</div><div>2.4 NM</div><div>6 NM</div></div></div> <div>4 NM Holding Pattern</div>					
CATEGORY		A		B		C		D	
LPV DA		974- <sup>3</sup> / <sub>4</sub>		250 (300- <sup>3</sup> / <sub>4</sub> )					
LNAV/ VNAV		974- <sup>3</sup> / <sub>4</sub>		250 (300- <sup>3</sup> / <sub>4</sub> )					
LNAV MDA		1100-1		376 (400-1)					
C CIRCLING		1280-1		556 (600-1)		1280-1 <sup>1</sup> / <sub>2</sub> 556 (600-1 <sup>1</sup> / <sub>2</sub> )		1340-2 616 (700-2)	

STURGEON BAY, WISCONSIN

Amdt 2 14JUL22

44°51'N-87°25'W

DOOR COUNTY CHERRYLAND (SITE)

RNAV (GPS) RWY 20

EC-3, 07 AUG 2025 to 04 SEP 2025