

WAAS

CH 81904

W02A

APP CRS

016°

Rwy Idg

4599

TDZE

724

Apt Elev

724

RNAV (GPS) RWY 2

DOOR COUNTY CHERRYLAND (SUE)

RNP APCH.

▼

▲

Rwy 2 helicopter visibility reduction below ¾ SM NA. For uncompensated Baro-VNAV systems, LNAV/VNAV NA below -16°C or above 54°C.

MISSED APPROACH:

Climb to 2600 direct VOBUY and hold.

AWOS-3PT

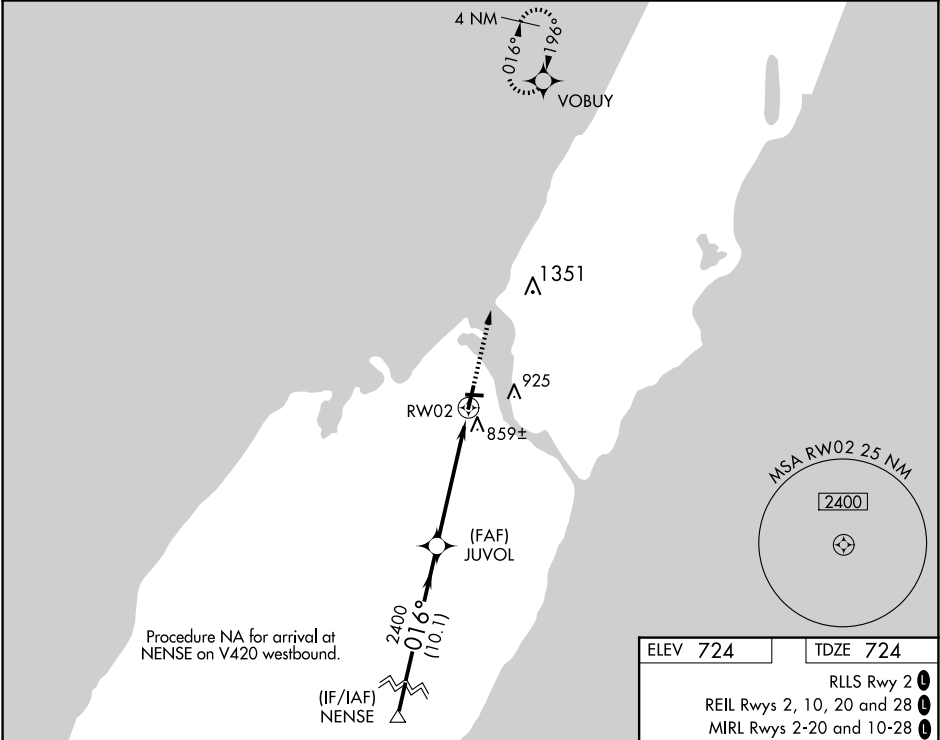
128.325

GREEN BAY APP CON ★

119.25 338.2

UNICOM

122.7(CTAF)0



NENSE		JUVOL		RWY 2	
3500		2400		2400	
GP 3.00°		016°		016°	
TCH 40		10.1 NM		4 NM	
CATEGORY		A		B	
LPV DA		1013-1		289 (300-1)	
LNAV/ VNAV DA		1164-1½		440 (500-1½)	
LNAV MDA		1120-1		396 (400-1)	
CIRCLING		1280-1		556 (600-1)	

