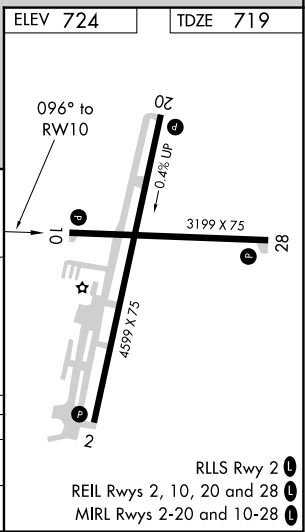
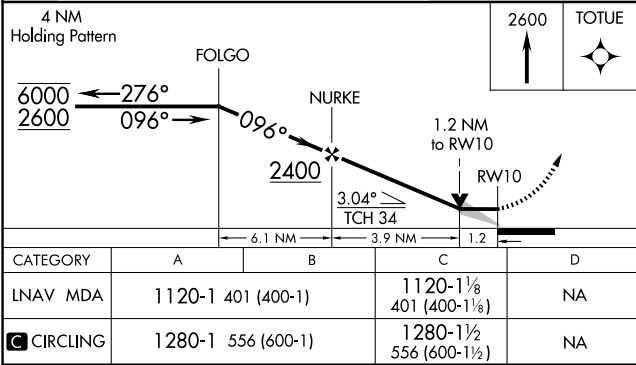
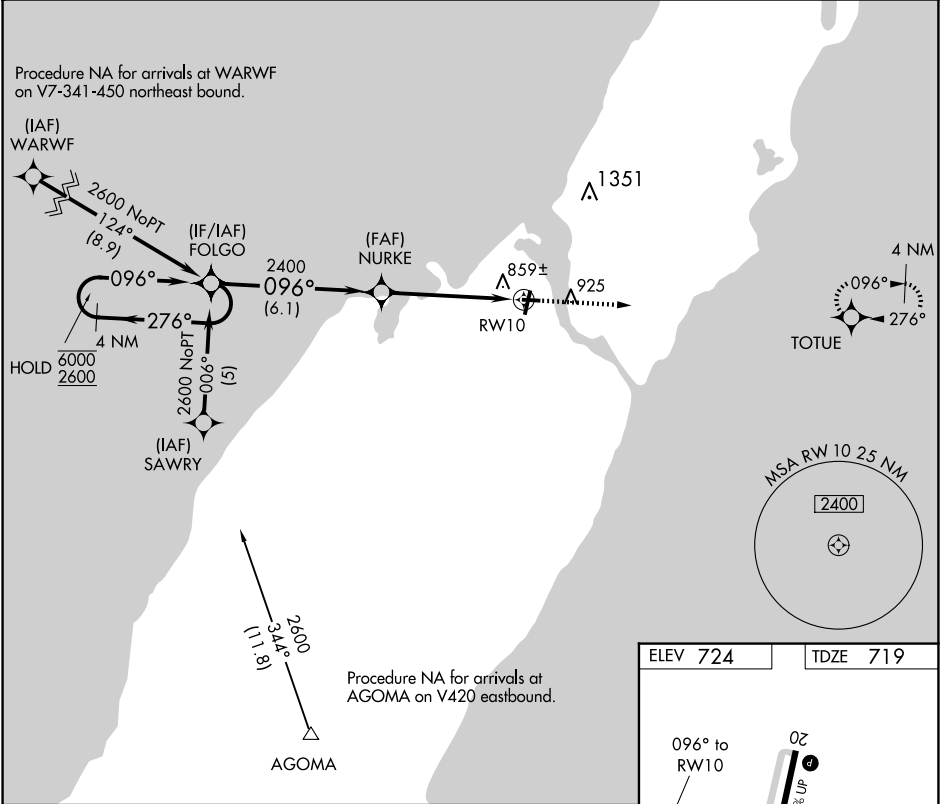


APP CRS	Rwy Idg	3199
096°	TDZE	719
	Apt Elev	724

RNAV (GPS) RWY 10
DOOR COUNTY CHERRYLAND (SUE)

RNP APCH. V A		MISSED APPROACH: Climb to 2600 direct TOTUE and hold.
AWOS-3PT 128.325	GREEN BAY APP CON ★ 119.25 338.2	UNICOM 122.7 (CTAF) 0



EC-3, 07 AUG 2025 to 04 SEP 2025

EC-3, 07 AUG 2025 to 04 SEP 2025