

WAAS CH 61126 W22A	APP CRS 224°	Rwy Idg TDZE 1662 Apt Elev 1664
--	------------------------	---

RNAV (GPS) RWY 22

ROCKWOOD MUNI (RKW)

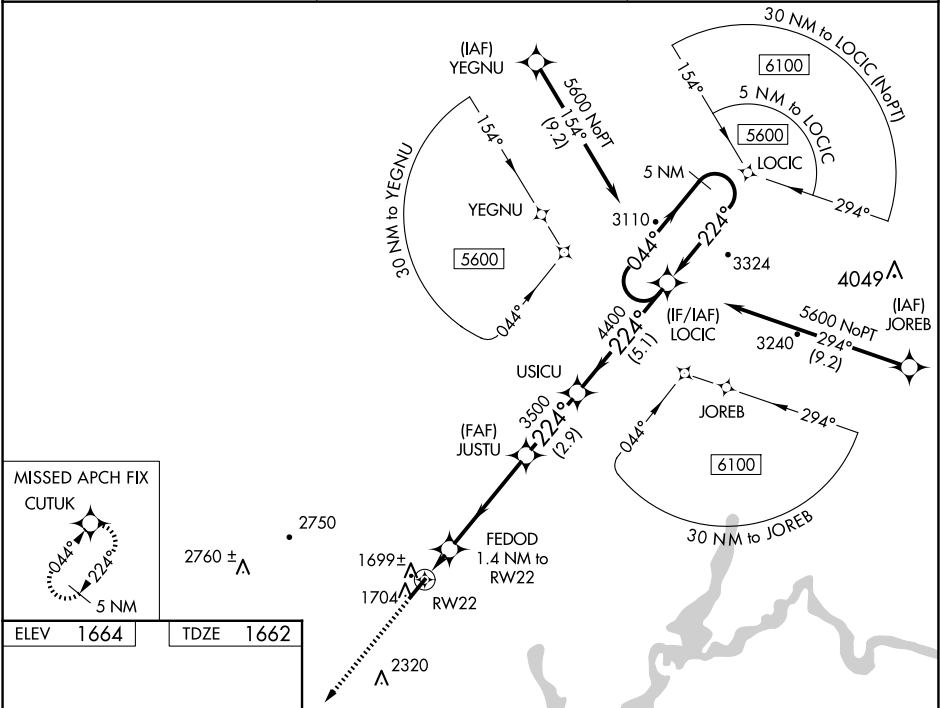
▼

▲ NA

For uncompensated Baro-VNAV systems, LNAV/VNAV NA below -18°C (0°F) or above 33°C (91°F). DME/DME RNP-0.3 NA. When local altimeter setting not received, use Crossville altimeter setting; increase LPV DA to 1987 feet and visibility all Cats ¼ SM; increase LNAV/VNAV DA to 2011 feet and visibility all Cats ¼ SM; increase all MDA 80 feet and increase LNAV Cat C and D visibility ¼ SM and Circling Cat C visibility ½ SM. Baro-VNAV NA when using Crossville altimeter setting.

MISSED APPROACH: Climb to 5300 direct CUTUK and hold, continue climb-in-hold to 5300.

AWOS-3 118.775	ATLANTA CENTER 133.6 254.3	UNICOM 122.8 (CTAF) 0
--------------------------	--------------------------------------	---------------------------------



ELEV 1664

TDZE 1662

5300 CUTUK

224°

0.26% UP

5000 x 100

1705

MIRL Rwy 4-22

REIL Rwy 4 and 22

*LNAV only.		LOCIC Holding Pattern	
FEDOD 1.4 NM to RW22		JUSTU 3500	
RW22		USICU 4400	
2100 *		5600	
1.4 NM		5.1 NM	
4.4 NM		2.9 NM	
CATEGORY	A	B	C
LPV DA	1912-7/8		250 (300-7/8)
LNAV/DA	1936-7/8		274 (300-7/8)
LNAV MDA	1980-1		318 (400-1)
CIRCLING	2100-1 436 (500-1)	2200-1 536 (600-1)	2260-1½ 596 (600-1½)
			2780-3 1116 (1200-3)