

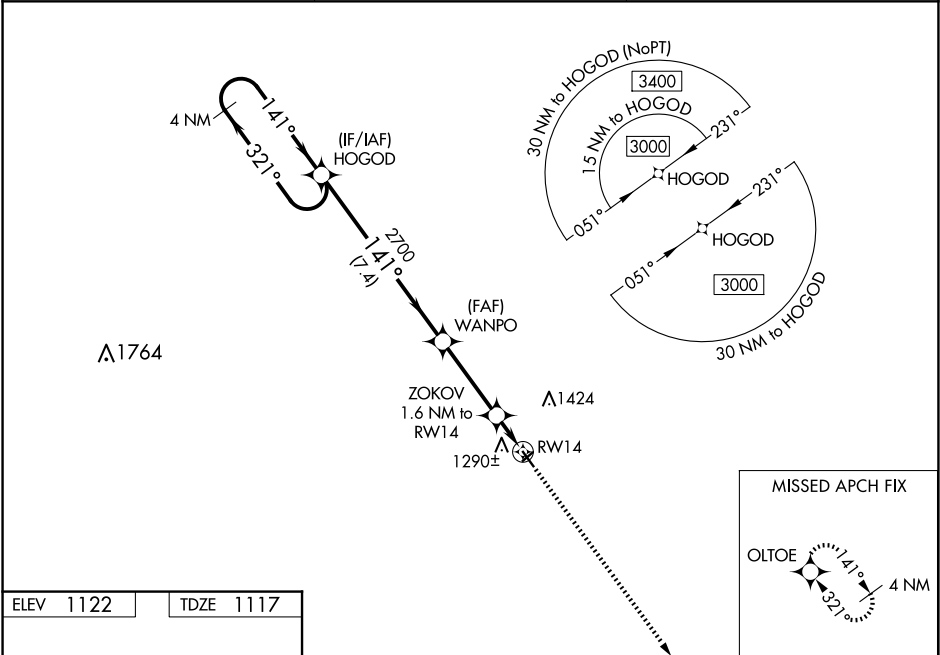
WAAS CH 40237 W14A	APP CRS 141°	Rwy Idg TDZE Apt Elev	3851 1117 1122
--	------------------------	-----------------------------	---

RNAV (GPS) RWY 14
WEBSTER CITY MUNI (EBS)

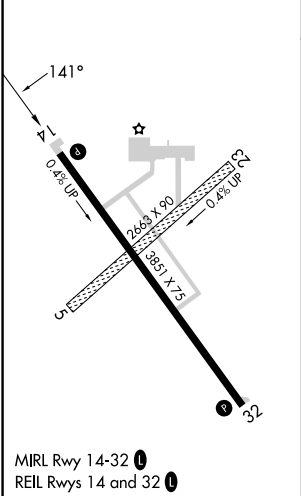
⚠ Baro-VNAV NA when using Clarion altimeter setting. For uncompensated Baro-VNAV systems, LNAV/VNAV NA below -17°C (2°F) or above 54°C (130°F). DME/DME RNP-0.3 NA. When local altimeter setting not received, use Clarion altimeter setting and increase all DAs 49 feet, and all MDA 60 feet; increase LNAV/VNAV all Cats visibility 1/8 mile. Helicopter visibility reduction below 3/4 SM NA.

MISSED APPROACH: Climb to 3000 direct OLT OE and hold.

AWOS-3 127.825	MINNEAPOLIS CENTER 134.0 288.3	UNICOM 122.8 (CTAF) 0
--------------------------	--	---------------------------------



ELEV 1122	TDZE 1117
-----------	-----------



<div>4 NM Holding Pattern</div> <div>HOGOD</div>				<div>VGSi and RNAV glidepath not coincident (VGSi Angle 3.00/TCH 32).</div>		<div>3000</div> <div>↑</div>	<div>OLTOE</div> <div>✦</div>	
<div>3000</div> <div>← 321°</div> <div>141° →</div>				<div>WANPO</div> <div>2700</div>		<div>ZOKOV</div> <div>1.6 NM to RW14</div>	<div>*LNAV only</div>	
<div>GP 3.00°</div> <div>TCH 40</div>				<div>2700</div>		<div>*1640</div>	<div>RW14</div>	
				<div>7.4 NM</div>		<div>3.3 NM</div>	<div>1.6 NM</div>	
CATEGORY	A	B	C	D				
LPV DA	1367-1	250 (300-1)	NA					
LNAV/ VNAV	DA	1463-1¼	346 (400-1¼)	NA				
LNAV MDA	1540-1	423 (500-1)	NA					
C CIRCLING	1600-1	478 (500-1)	NA					