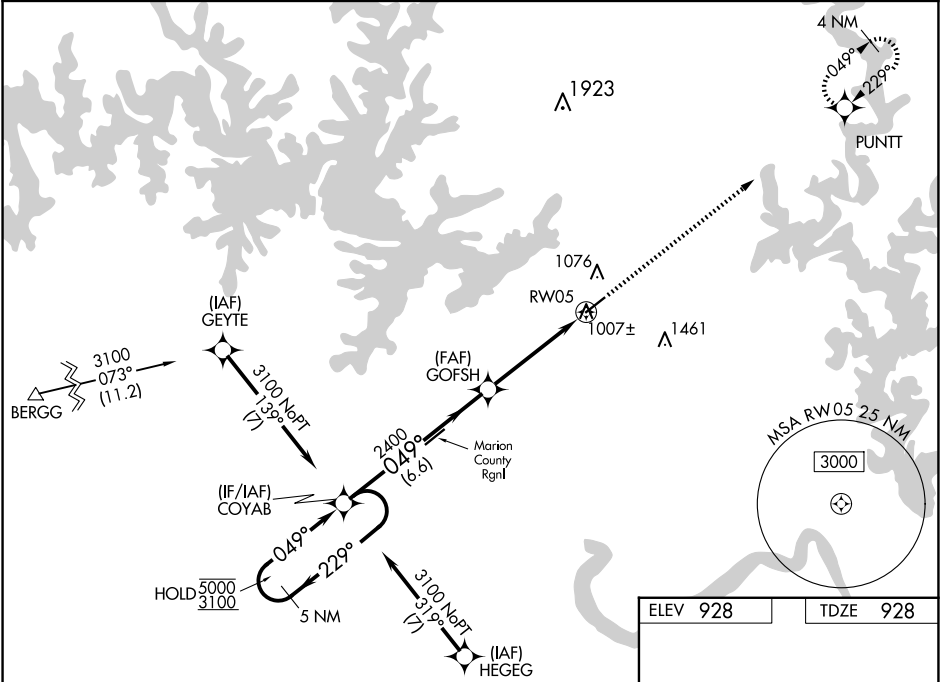


RNP APCH - GPS.

For uncompensated Baro-VNAV systems, LNAV/VNAV NA below -13°C or above 54°C. Procedure NA at night. Circling NA for Cat C southeast of Rwy 5-23. Rwy 5 helicopter visibility reduction below 1 SM NA.

MISSED APPROACH: Climb to 3000 direct PUNTT and hold.

ASOS <b>133.975</b>	MEMPHIS CENTER <b>126.85 281.55</b>	UNICOM <b>123.0 (CTAF)</b>
------------------------	--	-------------------------------



5 NM Holding Pattern		VGSi and RNAV glidepath not coincident (VGSi 3.00/TCH 38).		3000	PUNTT
COYAB		GOFSH		RWY 5	
5000 ← 229°		2400			
3100 → 049°		2400			
GP 3.00°		2400			
TCH 44		2400			
6.6 NM		4.5 NM			
CATEGORY	A	B	C	D	
LPV DA	1201-1	273 (300-1)		NA	
LNAV/VNAV DA	1250-1	322 (400-1)		NA	
LNAV MDA	1280-1	352 (400-1)		NA	
CIRCLING	1400-1	472 (500-1)	1460-1½ 532 (600-1½)	NA	

