

MOUNTAIN HOME, ARKANSAS

AL-5406 (FAA)

24305

APP CRS
229°

Rwy Idg	5000
TDZE	919
Apt Elev	928

RNAV (GPS) RWY 23
BAXTER COUNTY (BPK)

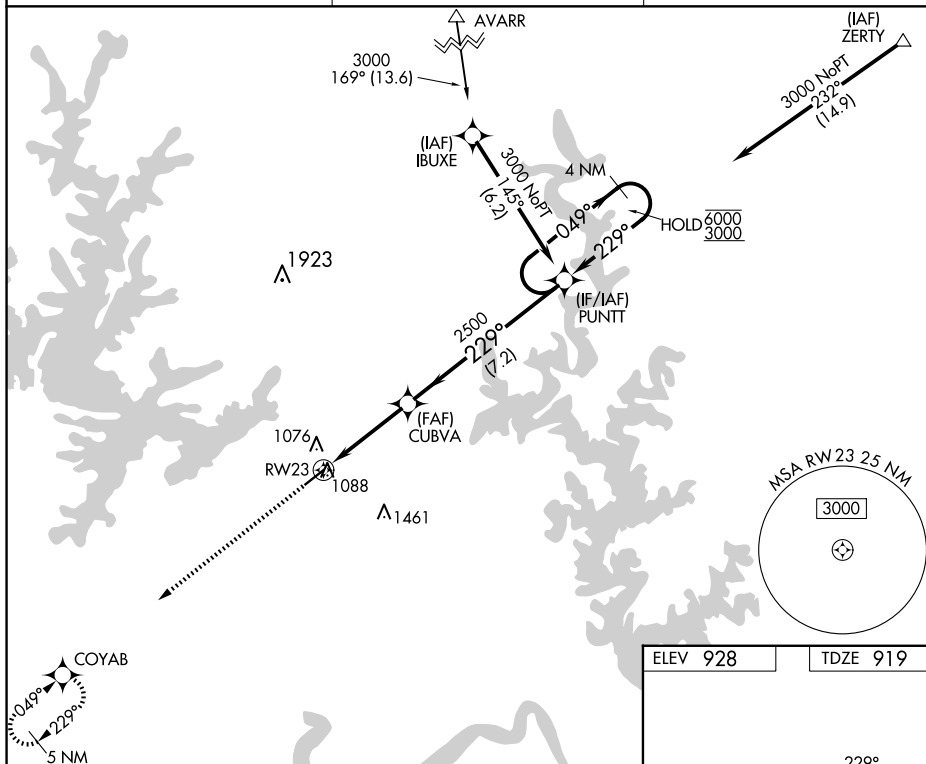
RNP APCH - GPS.

T Procedure NA at night. Rwy 23 helicopter visibility reduction below 1 SM NA.
A Circling NA for Cat C southeast of Rwy 5-23.

MISSED APPROACH: Climb to 3100 direct COYAB and hold.

ASOS
133.975

MEMPHIS CENTER
126.85 281.55

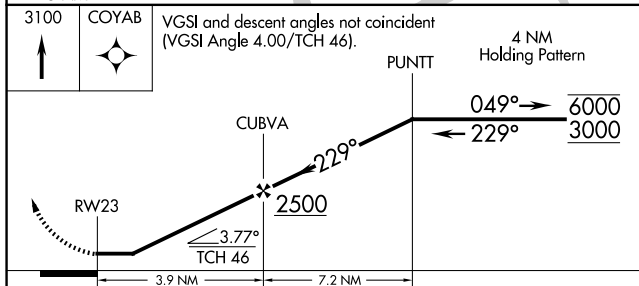
UNICOM
123.0 (CTAF) **L**


ELEV 928

TDZE 919

VGSI and descent angles not coincident (VGSI Angle 4.00/TCH 46).

4 N/M
Holding Pattern



CATEGORY	A	B	C	D
LNAV MDA	1360-1	441 (500-1)	1360-1 $\frac{3}{8}$ 441 (500-1 $\frac{3}{8}$)	NA
 CIRCLING	1400-1	472 (500-1)	1460-1 $\frac{1}{2}$ 532 (600-1 $\frac{1}{2}$)	NA

REIL Rwy 5 and 23 **L**
MIRL Rwy 5-23 **L**

MOUNTAIN HOME, ARKANSAS

Amdt 1 31OCT24

36°22'N-92°28'W

BAXTER COUNTY (BPK)

RNAV (GPS) RWY 23