

WAAS CH <b>97531</b> <b>W19B</b>	APP CRS <b>194°</b>	Rwy Idg TDZE Apt Elev	<b>3950</b> <b>733</b> <b>733</b>
--	------------------------	-----------------------------	---

RNAV (GPS) Z RWY 19  
MORRISVILLE-STOWE STATE (MVL)

RNP APCH - GPS.

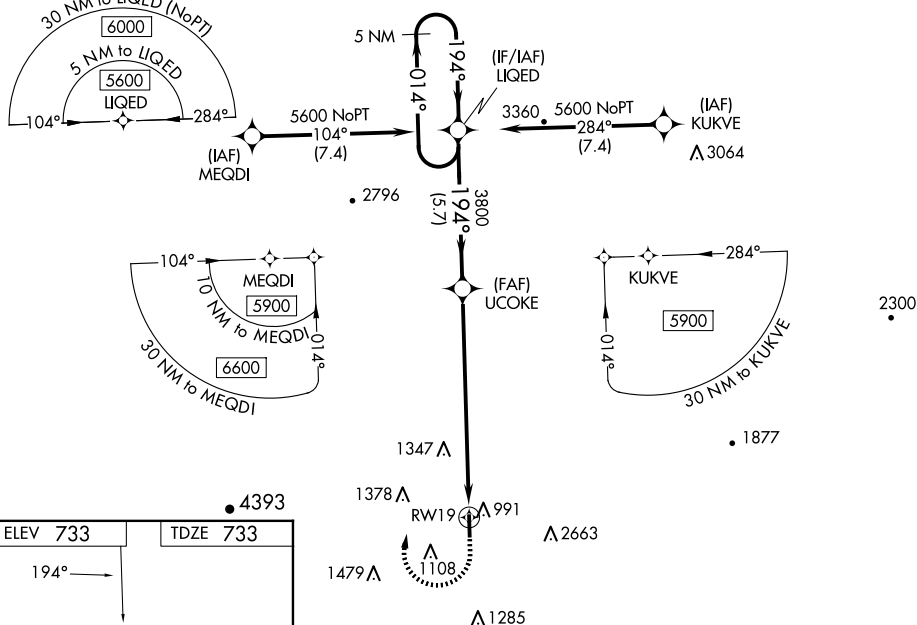
**V**  
**A**  
**☼** -19°C

Circling NA for Cat C E of Rwy 1-19. VDP NA when using Burlington altimeter setting. Rwy 19 helicopter visibility reduction below  $\frac{3}{4}$  SM NA. When local altimeter setting not received, use Burlington altimeter setting: increase LPV DA to 1380 feet and all visibilities  $\frac{3}{8}$  SM. Increase LNAV/VNAV DA to 1690 feet and all visibilities  $\frac{1}{2}$  SM. Increase all MDAs 120 feet. Baro-VNAV NA.

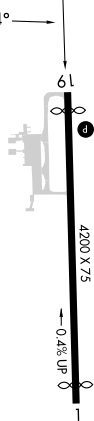
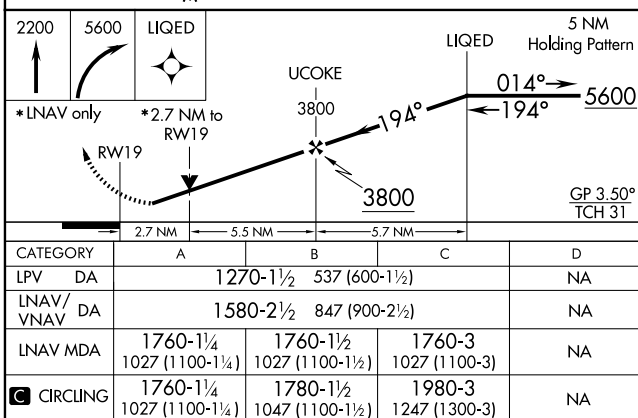
**MISSED APPROACH:** (Do not exceed 165K until LIQED) Climb to 2200 then climbing right turn to 5600 direct LIQED and hold, continue climb-in-hold to 5600. Missed approach requires minimum climb of 325 feet per NM to 3000; if unable to meet climb gradient, see RNAV (GPS) Y Rwy 19.

ASOS  
**135.625**

BOSTON CENTER  
135.7 282.2

UNICOM  
122.8 (CTAF) **L**

ELEV 733		TDZE 733
----------	--	----------

REIL Rwys 1 and 19 **L**HIRL Rwy 1-19 **L**

MORRISVILLE, VERMONT

Amdt 2A 29DEC22

MORRISVILLE-STOWE STATE (MVL)

44°32'N-72°37'W

RNAV (GPS) Z RWY 19

NE-1, 07 AUG 2025 to 04 SEP 2025