

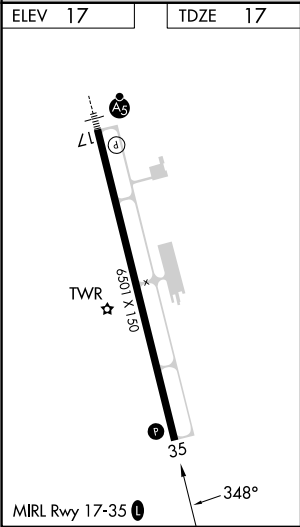
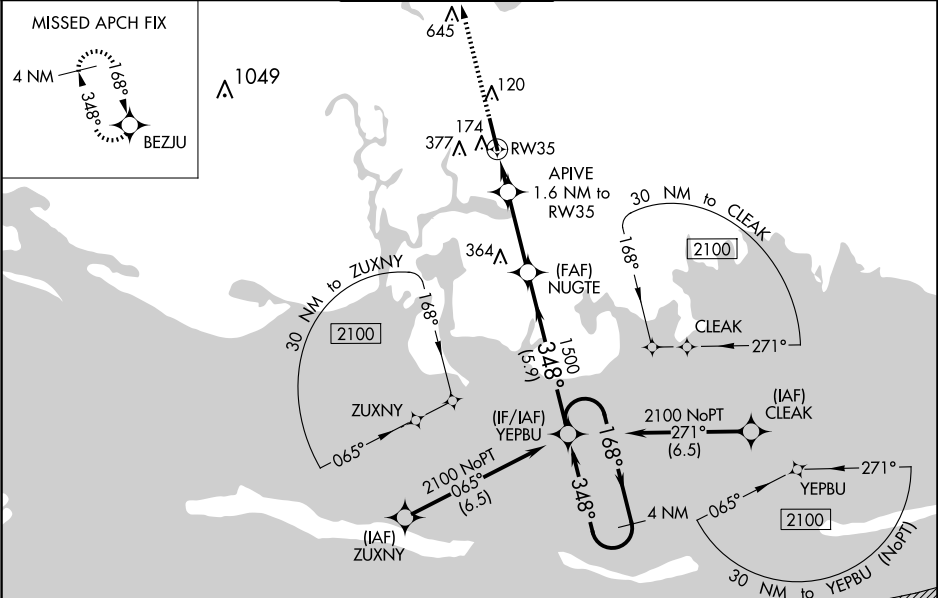
WAAS CH <b>72904</b> <b>W35A</b>	APP CRS <b>348°</b>	Rwy Idg <b>6501</b> TDZE <b>17</b> Apt Elev <b>17</b>
----------------------------------------	------------------------	-------------------------------------------------------------

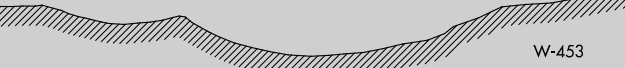




RNAV (GPS) RWY 35  
TRENT LOTT INTL (PQL)

**⚠** Baro-VNAV NA when using Mobile Rgnl altimeter setting. For uncompensated Baro-VNAV systems, LNAV/VNAV NA below -5°C (23°F) or above 54°C (130°F). DME/DME RNP-0.3 NA. When local altimeter setting not received, use Mobile Rgnl altimeter setting and increase LPV DA to 342 feet, LNAV/VNAV DA to 422 feet, and all MDA 80 feet; increase LPV and LNAV/VNAV visibility ¼ mile all Cots. Increase LNAV visibility Cots C/D ½ mile and Circling visibility Cots C/D ½ mile.

MISSED APPROACH: Climb to 1800 direct BEZJU and hold.

ATIS <b>135.175</b>	MOBILE APP CON ★ <b>121.0 307.1</b>	TRENT LOTT TOWER ★ <b>118.575 (CTAF) 0</b>	GND CON <b>121.725</b>	CLNC DEL <b>121.725</b>	UNICOM <b>122.8</b>
------------------------	----------------------------------------	-----------------------------------------------	---------------------------	----------------------------	------------------------



					
<div><div><div>1800</div><div>↑</div></div><div><div>BEZJU</div><div></div></div></div>					
<div><div><div>*LNAV only.</div><div><div>RW35</div><div></div></div></div><div><div>APIVE</div><div>1.6 NM to RW35</div></div><div><div>NUGTE</div><div>1500</div><div></div></div><div><div>YEPBU</div><div>4 NM Holding Pattern</div></div><div><div>168° →</div><div>← 348°</div><div>2100</div></div><div><div>GP 3.00°</div><div>TCH 40</div></div></div>					
<div><div><div>1.6 NM</div><div>2.9 NM</div><div>5.9 NM</div></div><div><div>*560</div><div>1500</div><div>348°</div></div></div>					
CATEGORY	A		B	C	D
LPV DA	267-7⁄8		250 (300-7⁄8)		
LNAV/VNAV DA	347-1 1⁄8		330 (400-1 1⁄8)		
LNAV MDA	440-1 423 (500-1)		440-1 1⁄4 423 (500-1 1⁄4)		
 CIRCLING	480-1 463 (500-1)	680-1 663 (700-1)	680-1 3⁄4 663 (700-1 3⁄4)		680-2 663 (700-2)

SC-4, 07 AUG 2025 to 04 SEP 2025

SC-4, 07 AUG 2025 to 04 SEP 2025