

| | | |
|--|------------------------|---|
| WAAS CH 58204 W17A | APP CRS 168° | Rwy Idg 6501 TDZE 17 Apt Elev 17 |
|--|------------------------|---|

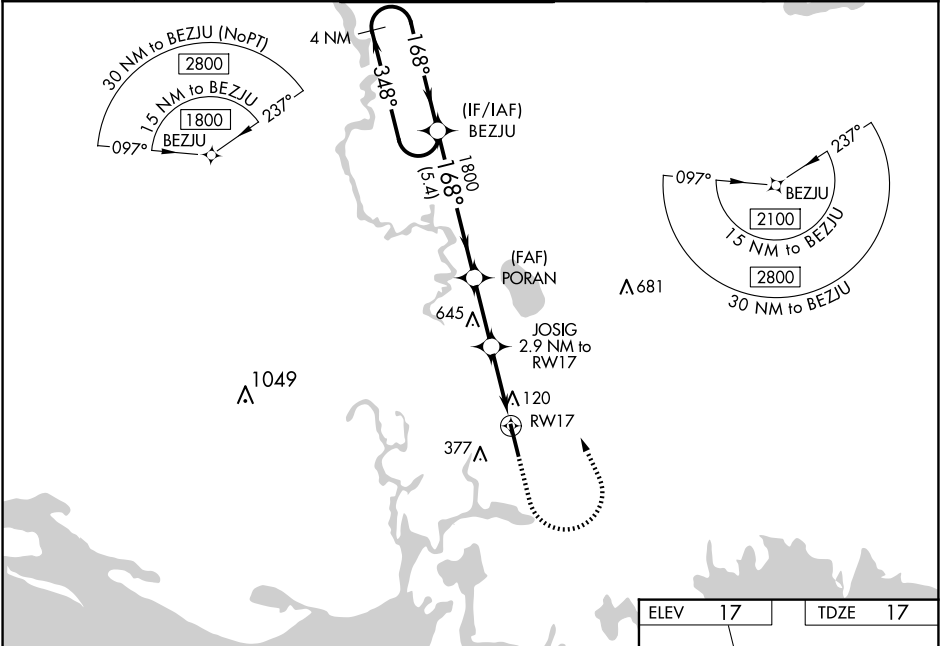
RNAV (GPS) RWY 17
TRENT LOTT INTL (PQL)

RNP APCH - GPS.

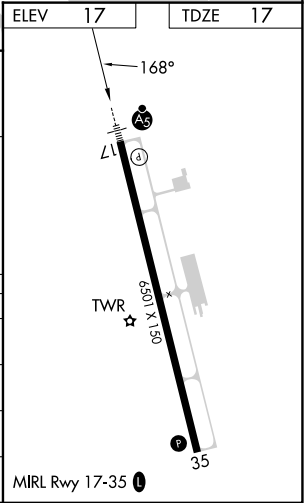
⚠ For uncompensated Baro-VNAV systems, LNAV/VNAV NA below -5°C or above 54°C.
⚠ When local altimeter setting not received, use Mobile Rgnl altimeter setting; increase LPV DA to 292 feet and LNAV/VNAV DA to 357 feet; increase LNAV/VNAV all visibilities $\frac{1}{8}$ SM. Increase all MDA 80 feet and LNAV Cat C/D visibility $\frac{1}{4}$ SM and Circling Cat C/D visibility $\frac{1}{2}$ SM. Baro-VNAV and VDP NA with Mobile Rgnl altimeter setting. For inop ALS when using Mobile Rgnl altimeter setting increase LPV all Cats visibility to $\frac{7}{8}$ SM.

MALSR
MISSED APPROACH:
Climb to 800 then
climbing left turn to
1800 direct BEZJU
and hold.

| | | | | | |
|------------------------|--|---|---------------------------|----------------------------|------------------------|
| ATIS 135.175 | MOBILE APP CON ★ 121.0 307.1 | TRENT LOTT TOWER ★ 118.575 (CTAF) 0 | GND CON 121.725 | CLNC DEL 121.725 | UNICOM 122.8 |
|------------------------|--|---|---------------------------|----------------------------|------------------------|



| | | | | | |
|----------------------|----------------------|---------------------------|---|---------------------------|----------------|
| 4 NM Holding Pattern | | BEZJU | PORAN | JOSIG | 1 NM to RWY 17 |
| 1800 ← 348° | | 1800 | 1800 | 980 | |
| GP 3.00° | | | | | |
| TCH 50 | | | | | |
| | | 5.4 NM | 2.5 NM | 1.9 NM | 1 NM |
| CATEGORY | A | B | C | D | |
| LPV DA | 217- $\frac{1}{2}$ | | 200 (200- $\frac{1}{2}$) | | |
| LNAV/VNAV DA | 282- $\frac{1}{2}$ | | 265 (300- $\frac{1}{2}$) | | |
| LNAV MDA | 380- $\frac{1}{2}$ | 363 (400- $\frac{1}{2}$) | 380- $\frac{5}{8}$ | 363 (400- $\frac{5}{8}$) | |
| CIRCLING | 480-1 463 (500-1) | 680-1 663 (700-1) | 680-1 $\frac{3}{4}$ 663 (700-1 $\frac{3}{4}$) | 680-2 663 (700-2) | |



SC-4, 07 AUG 2025 to 04 SEP 2025

SC-4, 07 AUG 2025 to 04 SEP 2025