

APP CRS	Rwy Ldg	5342
094°	TDZE	379
	Apt Elev	388

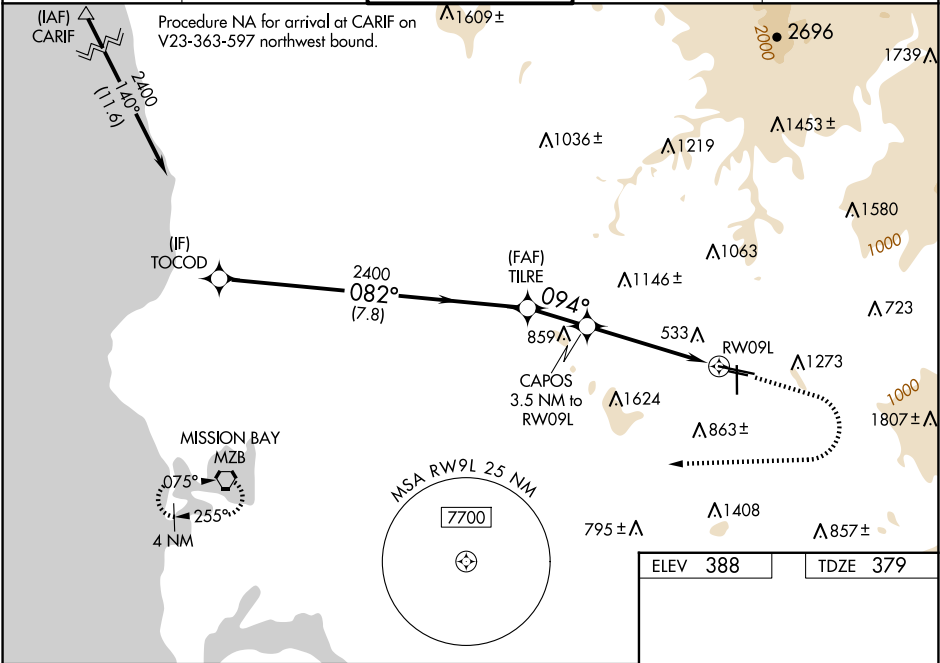
RNAV (GPS) RWY 9L  
GILLESPIE FLD (SEE)

RNP APCH - GPS.

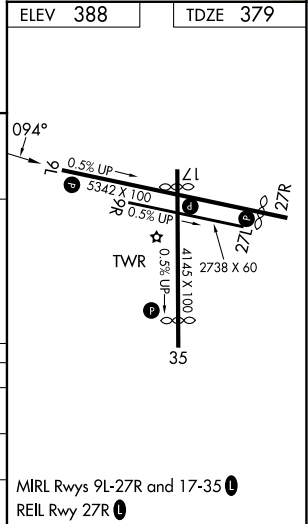
Rwy 9L helicopter visibility reduction below 1 SM NA. Circling NA northeast of Rwy 17 and 27R. For uncompensated Baro-VNAV systems, LNAV/VNAV NA below -1.5° or above 54°C. Circling Rwy 9L, 27L/R, 35 NA at night. Rwy 9L Straight-in minimums NA at night. When local altimeter setting not received, use NKX altimeter setting and increase LNAV/VNAV DA to 1306 feet. Increase all MDAs 40 feet.

MISSED APPROACH: (Do not exceed 180K until MZB) Climb to 1900 then climbing right turn to 3000 direct MZB VORTAC and hold.

ATIS 125.45	SOCAL APP CON 124.35 279.625	GILLESPIE TOWER* 120.7 (CTAF) 257.8	GND CON 121.7	CLNC DEL 125.1
----------------	---------------------------------	--	------------------	-------------------



	TOCOD	TILRE	CAPOS	RW09L
	2400	2400	2400	1780
	GP 3.75° TCH 45			
	7.8 NM	1.6 NM	3.5 NM	
CATEGORY	A	B	C	D
LNAV/VNAV DA	1272-2½	893 (900-2½)		NA
LNAV MDA	1480-1¼ 1101 (1100-1½)	1480-1½ 1101 (1100-1½)	1480-3 1101 (1100-3)	NA
CIRCLING	1480-1¼ 1092 (1100-1½)	1480-1½ 1092 (1100-1½)	1940-3 1552 (1600-3)	NA



SW-3, 07 AUG 2025 to 04 SEP 2025

SW-3, 07 AUG 2025 to 04 SEP 2025