

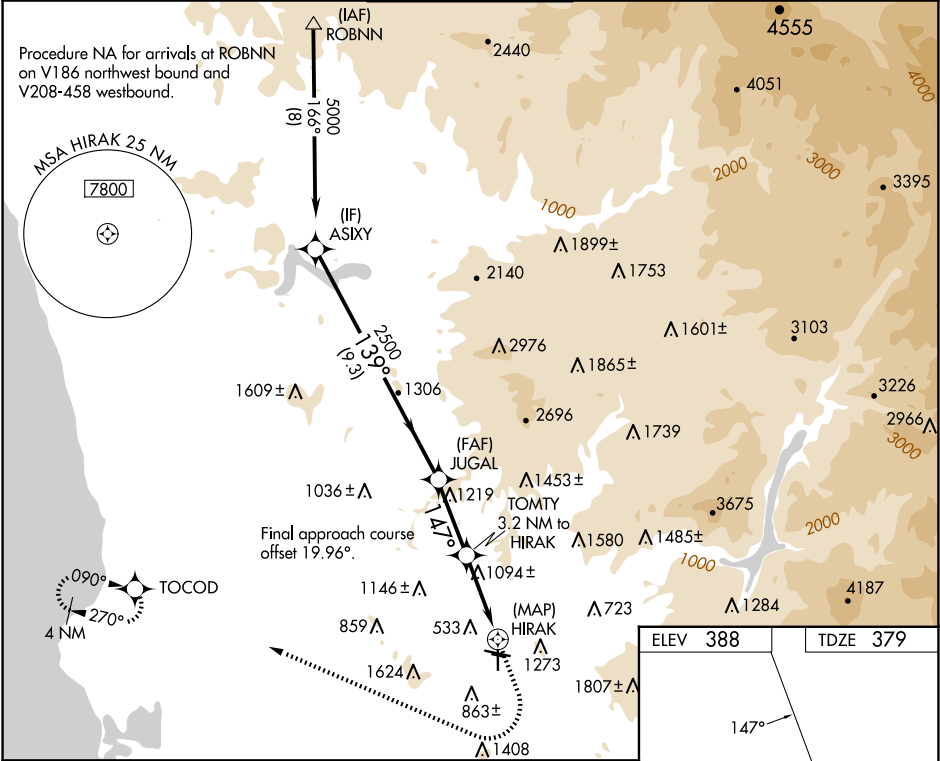
WAAS CH 86928 W17A	APP CRS 147°	Rwy Ldg TDZE Apt Elev	3695 379 388
--	------------------------	-----------------------------	---

RNAV (GPS) RWY 17

GILLESPIE FLD (SEE)

RNP APCH - GPS.	MISSED APPROACH: Climb to 1500 then climbing right turn to 3000 direct TOCOD and hold.
<div><div>▼</div><div>⚠</div></div> <div>Circling NA northeast of Rwy 17 and 27R. When local altimeter setting not received, use Miramar MCAS altimeter setting and increase all MDA 40 feet. Rwy 17 helicopter visibility reduction below 1 SM NA. Circling Rwy 27R, 35 NA at night.</div>	

ATIS 125.45	SOCAL APP CON 124.35 279.625	GILLESPIE TOWER* 120.7 (CTAF) 257.8	GND CON 121.7	CLNC DEL 125.1
-----------------------	--	---	-------------------------	--------------------------



ASIXY	Visual Segment - Obstacles.				1500	3000	TOCOD
5000	139°				2500	147°	HIRAK
9.3 NM				2.9 NM	3.2 NM	0.5	
CATEGORY	A	B	C	D			
LP MDA	1360-1¼ 981 (1000-1¼)	1360-1½ 981 (1000-1½)	1360-3	981 (1000-3)			
LNAV MDA	1380-1¼ 1001 (1000-1¼)	1380-1½ 1001 (1000-1½)	1380-3	1001 (1000-3)			
CIRCLING	1440-1¼ 1052 (1100-1¼)	1440-1½ 1052 (1100-1½)	1940-3	1552 (1600-3)			

ELEV 388

TDZE 379

147°

0.5% UP

0.5% UP

0.5% UP

35

3442 X 100

2738 X 60

1445 X 100

27R

17R

TOCOD

HIRAK

JUGAL

ASIXY

5000

2500

1580

139°

147°

9.3 NM

2.9 NM

3.2 NM

0.5

MIRL Rwy 9L-27R and 17-35
REIL Rwy 27R