

PADRZ TWO DEPARTURE (RNAV)

GILLESPIE FLD (SEE)
SAN DIEGO/EL CAJON, CALIFORNIA

TOP ALTITUDE:
15000

DEPARTURE ROUTE DESCRIPTION

TAKEOFF RUNWAYS 9L/9R: Climbing right turn heading 165° and on MZB R-076 to MZB VORTAC to 3000, expect vectors to cross GYWNN at or above, 8000, then on track 308° to PADRZ, thence...

TAKEOFF RUNWAY 17: Climb heading 165° and on MZB R-076 to MZB VORTAC to 2800, expect vectors to cross GYWNN at or above 8000, then on track 308° to PADRZ, thence. . . .

TAKEOFF RUNWAYS 27L/27R: Climbing right turn heading 320° to 3000, expect vectors to cross GYWNN at or above 8000, then on track 308° to PADRZ, thence. . . .

TAKEOFF RUNWAY 35: Climbing left turn heading 320° to 3000, expect vectors to cross GYWNN at or above 8000, then on track 308° to PADRZ, thence. . . . on (transition). Maintain 15000. Expect higher altitude 10 minutes after departure.

CHKNN TRANSITION (PADRZ2.CHKNN)

IKAYE TRANSITION (PADRZ2.IKAYE)

OROSZ TRANSITION (PADRZ2. OROSZ)

SHAFTER TRANSITION (PADRZ2.EHF)

TAKEOFF MINIMUMS

Rwy 9L: 900-2¾ with minimum climb of 400' per NM to 3600.

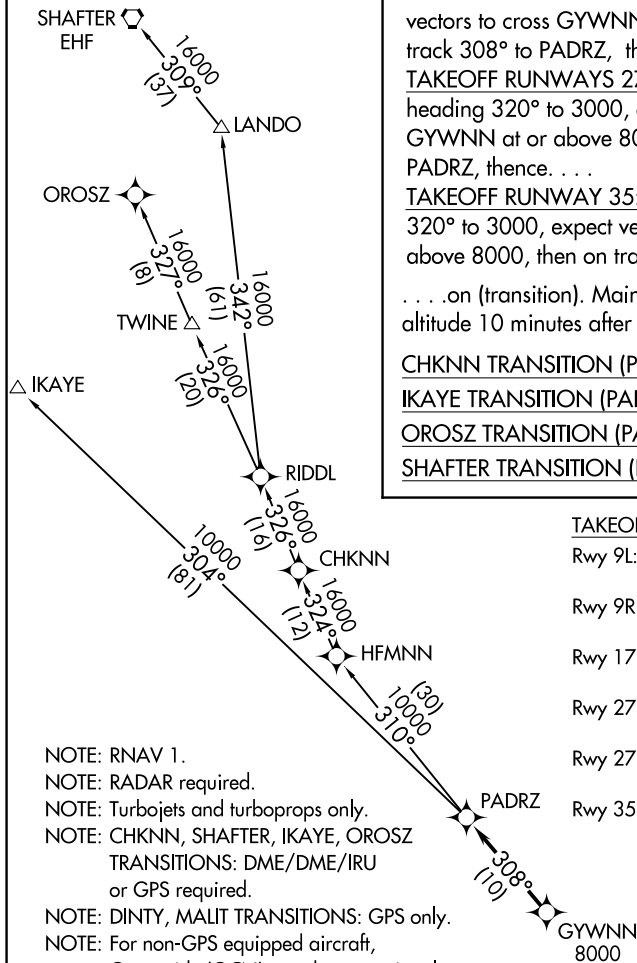
Rwy 9R: 900-2 $\frac{3}{4}$ with minimum climb of 405' per NM to 3600.

Rwy 17: Standard with minimum climb of 480' per NM to 2200.

Rwy 27L: Standard with minimum climb
of 320' per NM to 1200

Rwy 27R: Standard with minimum climb
of 420' per NM to 1200

Rwy 35: Standard with minimum climb of 400' per NM to 1600.



NOTE: RNAV 1.

NOTE: RADAR required.

NOTE: Turbojets and turboprops only.

NOTE: CHKN, SHAFTER, IKAYE, OROSZ
TRANSITIONS: DME/DME/IRU
or GPS required.

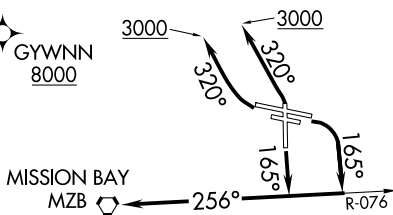
NOTE: DINTY, MALIT TRANSITIONS: GPS only.

NOTE: For non-GPS equipped aircraft,
Oceanside (OCN) must be operational.

NOTE: DINTY TRANSITION ATC assigned only.

NOTE: DINTY and MALIT TRANSITIONS NA
from SEE, SDM and RNM airports.

NOTE: Chart not to scale.



PADRZ TWO DEPARTURE (RNAV)

(PADRZ2.PADRZ) 07DEC17

SAN DIEGO/EL CAJON, CALIFORNIA
GILLESPIE FLD (SEE)

SW-3, 07 AUG 2025 to 04 SEP 2025