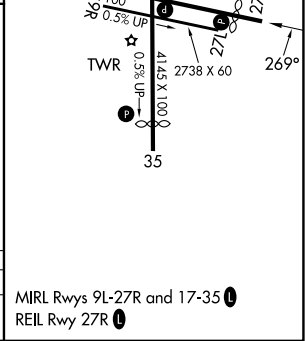
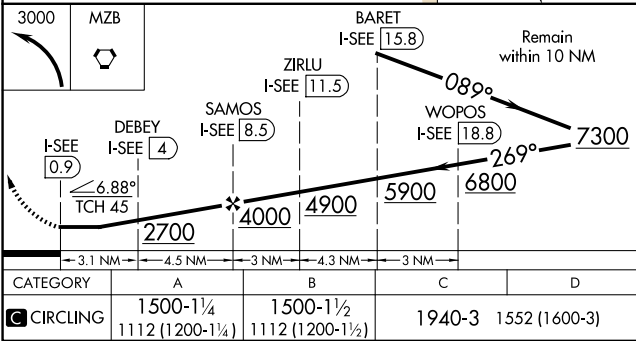
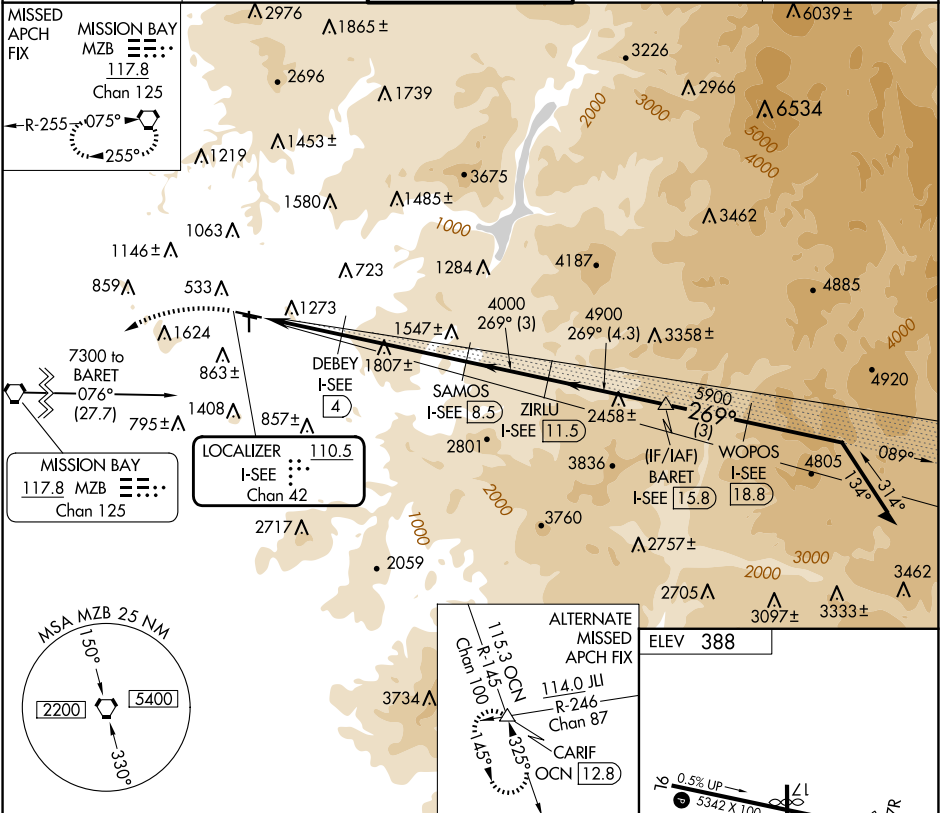


LOC/DME I-SEE 110.5 Chan 42	APP CRS 269°	Rwy Ldg TDZE Apt Elev	N/A N/A 388
--	------------------------	-----------------------------	--------------------------

LOC-D
GILLESPIE FLD (SE/E)

DME required.	MISSED APPROACH: Climbing left turn to 3000 direct to MZB VORTAC and hold.
When local altimeter setting not received, use Miramar MCAS altimeter setting and increase all MDA 40 feet. Circling NA northeast of Rwy 27R-17. Circling Rwy 27R, 35 NA at night.	

ATIS 125.45	SOCAL APP CON 124.35 279.625	GILLESPIE TOWER* 120.7 (CTAF) 257.8	GND CON 121.7	CLNC DEL 125.1
-----------------------	--	---	-------------------------	--------------------------



SW-3, 07 AUG 2025 to 04 SEP 2025

SW-3, 07 AUG 2025 to 04 SEP 2025