

SAN DIEGO, CALIFORNIA

AL-5401 (FAA)

25163

WAAS CH 45710 W28A	APP CRS 281°	Rwy Ldg 3399 TDZE 423 Apt Elev 427
--	------------------------	---

RNAV (GPS) RWY 28R
MONTGOMERY-GIBBS EXEC (MYF)

RNP APCH.

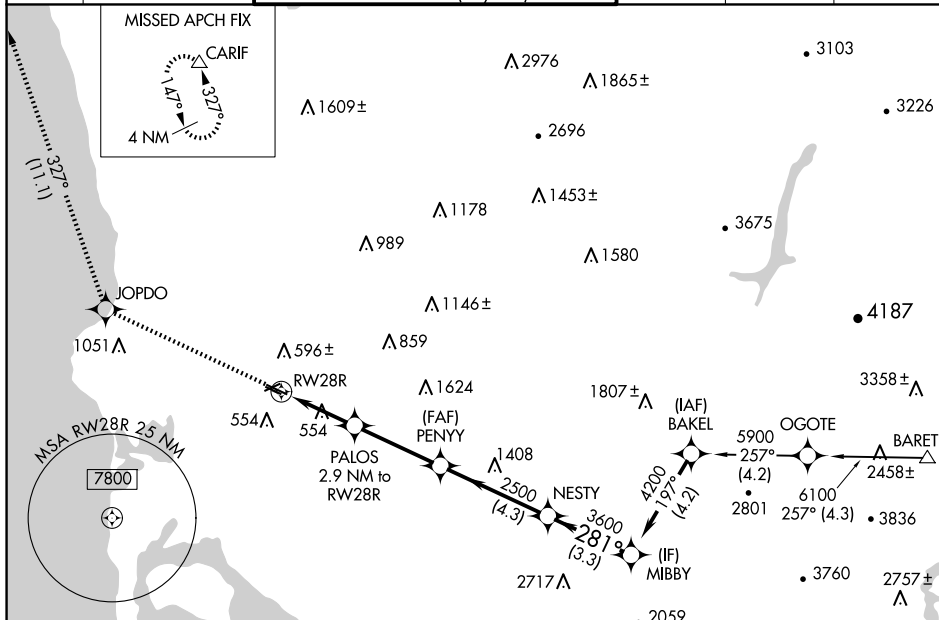
T Rwy 28R helicopter visibility reduction below $\frac{3}{4}$ SM NA.
A For uncompensated Baro-VNAV systems, LNAV/VNAV NA below -15°C or above 54°C.

MALSR

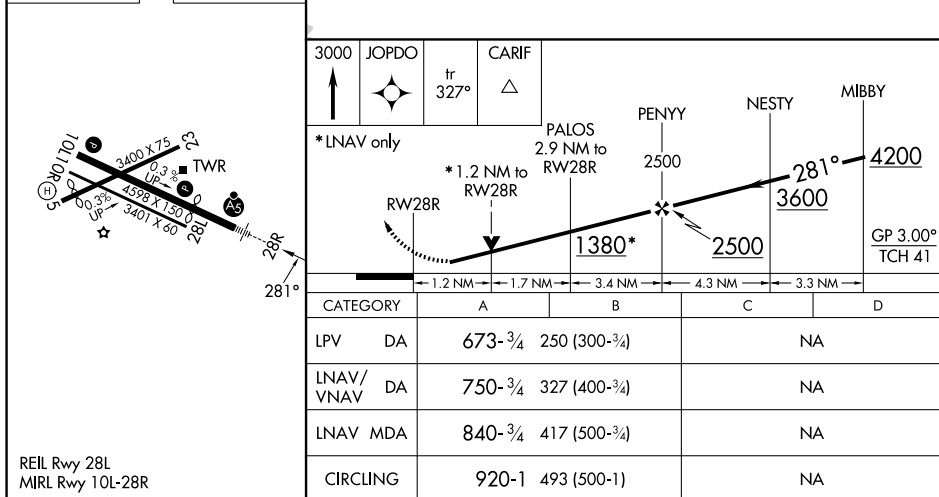


MISSED APPROACH: Climb to 3000 direct JOPDO and on track 327° to CARIF and hold.

ATIS 126.9	SOCAL APP CON 124.35 279.625	MONTGOMERY TOWER ★ 119.2 (CTAF) 0 269.4 (Rwys 5, 10L/R, 23, 28L) 125.7 269.4 (Rwy 28R)	GND CON 118.225	CLNC DEL 123.725	UNICOM 123.075
----------------------	--	---	---------------------------	----------------------------	--------------------------



ELEV 427		TDZE 423
----------	--	----------



SAN DIEGO, CALIFORNIA

Amdt 1C 28FEB19

MONTGOMERY-GIBBS EXEC (MYF)

RNAV (GPS) RWY 28R

32°49'N-117°08'W

SW-3, 07 AUG 2025 to 04 SEP 2025

SW-3, 07 AUG 2025 to 04 SEP 2025