

| | | |
|--|------------------------|---|
| WAAS CH 61114 W08B | APP CRS 079° | Rwy Ldg TDZE 462 Apt Elev 463 |
|--|------------------------|---|

RNAV (GPS) RWY 8R

SPIRIT OF ST LOUIS (SUS)

RNP APCH - GPS.

▼

▲

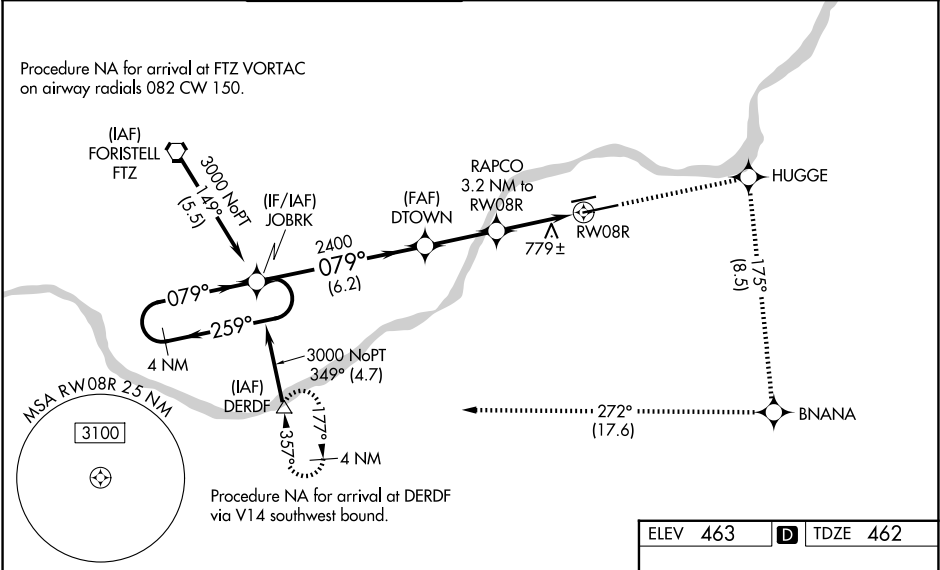
For uncompensated Baro-VNAV systems, LNAV/VNAV NA below -15°C or above 54°C. Baro-VNAV and VDP NA when using St Louis Lambert Intl altimeter setting. When local altimeter setting not received, use St Louis Lambert Intl altimeter setting and increase all DA 57 feet all MDA 60 feet, increase visibility LNAV/VNAV all Cats and LNAV Cats C/D ½ mile, and Circling Cat C ¼ mile. For inop MALSR, increase LNAV/VNAV all Cats visibility to 2½ mile and LNAV Cats C/D visibility to 1½ mile. For inop MALSR when using St Louis Lambert Intl altimeter setting, increase LNAV Cats C/D visibility to 1¾ mile.

#RVR 1800 authorized with use of FD or AP or HUD to DA, NA when using St Louis Lambert Intl altimeter setting.

MALSR

MISSED APPROACH:
Climb to 3000 direct HUGGE and right turn on track 175° to BNANA and right turn on track 272° to DERDF and hold.

| | | | | | | |
|----------------------|---|---|-------------------------|--------------------------|---|-------------------------|
| ATIS 134.8 | ST. LOUIS APP CON 126.5 254.3 | SPIRIT TOWER★ 124.75 (CTAF) 0 257.2 | GND CON 121.7 | CLNC DEL 133.1 | ST. LOUIS CLNC DEL 121.7 (when tower closed) | UNICOM 122.95 |
|----------------------|---|---|-------------------------|--------------------------|---|-------------------------|



4 NM Holding Pattern

JOBRK

3000

259°

079°

GP 3.00° TCH 55

3000

HUGGE

BNANA

DERDF

DTOWN

RAPCO

RW08R

1.540

1.6 NM to RW08R

1.6 NM

1.6 NM

1.6 NM

6.2 NM

2.6 NM

1.6 NM

1.6 NM

*LNAV only

| | | | | |
|--------------|----------------------|----------------------|--------------------|--------------------|
| CATEGORY | A | B | C | D |
| LPV DA# | 662/24 200 (200-½) | | | |
| LNAV/VNAV DA | 1129-1⅞ 667 (700-1⅞) | | | |
| LNAV MDA | 1040/24 578 (600-½) | 1040-1¼ 578 (600-1¼) | | |
| CIRCLING | 1100-1 637 (700-1) | 1140-1 677 (700-1) | 1160-2 697 (700-2) | 1360-3 897 (900-3) |

MIRL Rwy 8L-26R

HIRL Rwy 8R-26L