

WAAS CH 81914 W26B	APP CRS 259°	Rwy Ldg TDZE 462 Apt Elev 463
--	------------------------	---

RNAV (GPS) RWY 26L

SPIRIT OF ST LOUIS (SUS)

RNP APCH - GPS.

▼

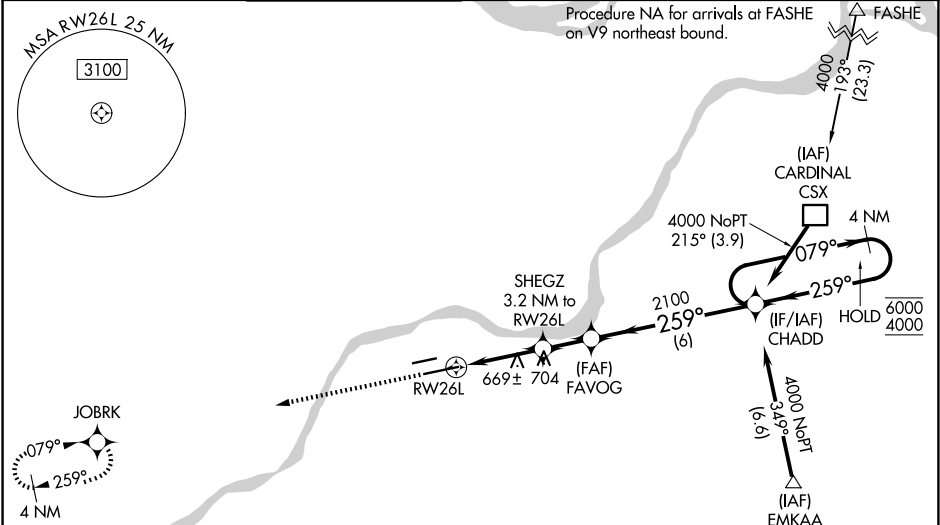
▲

Baro-VNAV and VDP NA when using St Louis Lambert Intl altimeter setting. For uncompensated Baro-VNAV systems, LNAV/VNAV NA below -18°C or above 54°C. For inop ALS when using St Louis Lambert Intl altimeter setting, increase LNAV/VNAV all Cats visibility to 1 3⁄8 SM and LNAV Cat C and D to 1 3⁄8 SM. When local altimeter setting not received, use St Louis Lambert Intl altimeter setting: increase LPV DA to 705 feet; increase LNAV/VNAV DA to 959 feet and all visibilities to RVR 5000; increase all MDAs 60 feet and LNAV visibility Cat C/D to RVR 5500 and Circling visibility Cat C 1⁄4 SM.
*RVR 1800 authorized with use of FD or AP or HUD to DA (NA when using St Louis Lambert Intl altimeter setting).

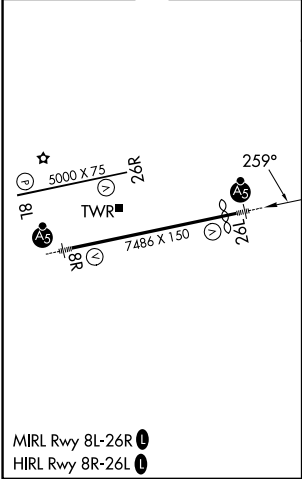
MALSR

MISSED APPROACH:
Climb to 3000 direct
JOBRK and hold.

ATIS 134.8	ST. LOUIS APP CON 126.5 254.3	SPIRIT TOWER* 124.75 (CTAF) 0 257.2	GND CON 121.7	CLNC DEL 133.1	ST. LOUIS CLNC DEL 121.7 (when tower closed)	UNICOM 122.95
----------------------	---	--	-------------------------	--------------------------	---	-------------------------



ELEV 463	D	TDZE 462
-----------------	----------	-----------------



3000	JOBKR	FAVOG	CHADD	4 NM Holding Pattern
SHEGZ 3.2 NM to RW26L	2100	2100	079° → 6000 ← 259° 4000	GP 3.00° TCH 55
1.3 NM to RW26L	1540	2100		
1.3 NM	1.9 NM	1.8 NM	6 NM	
CATEGORY	A	B	C	D
LPV DA*	662/24 200 (200-1⁄2)			
LNAV/VNAV DA	916/45 454 (500-7⁄8)			
LNAV MDA	920/24	458 (500-1⁄2)	920/45	458 (500-7⁄8)
CIRCLING	1100-1 637 (700-1)	1140-1 677 (700-1)	1180-2 717 (800-2)	1360-3 897 (900-3)

NC-3, 07 AUG 2025 to 04 SEP 2025

NC-3, 07 AUG 2025 to 04 SEP 2025