

TIFTON, GEORGIA

AL-5398 (FAA)

23334

WAAS CH <b>61118</b> <b>W34A</b>	APP CRS <b>332°</b>	Rwy Idg TDZE Apt Elev	<b>6506</b> <b>354</b> <b>355</b>
--	------------------------	-----------------------------	---

RNAV (GPS) RWY 34

HENRY TIFT MYERS (TMA)

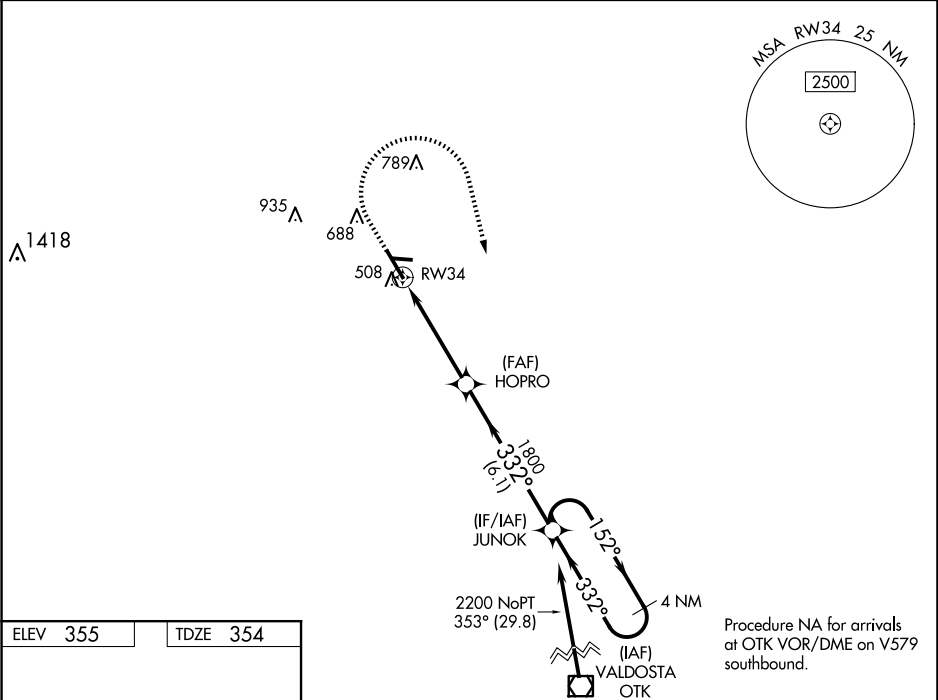
⚠

For uncompensated Baro-VNAV systems, LNAV/VNAV NA below -15°C (5°F) or above 54°C (130°F).  
DME/DME RNP-0.3 NA. Circling Rwy 10 NA at night.  
Rwy 34 helicopter visibility reduction below ¾ SM NA.

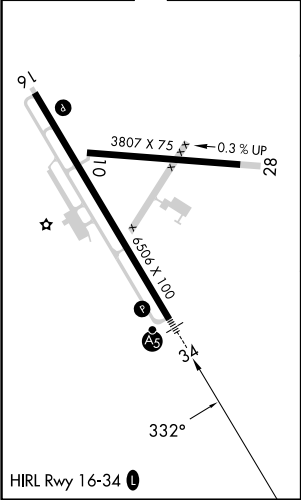
MALSR

MISSED APPROACH: Climb to 900 then climbing right turn to 2200 direct JUNOK and hold.

AWOS-3PT <b>118.525</b>	VALDOSTA APP CON★ <b>126.6 285.6</b>	UNICOM <b>122.7 (CTAF) 0</b>
----------------------------	---	---------------------------------



ELEV 355	TDZE 354
----------	----------



900	2200	JUNOK	JUNOK 4 NM Holding Pattern			
* LNAV only	* 1.2 NM to RW34	HOPRO 1800	1800	332°	152°	2200
RW34		1.2 NM	3.3 NM	6.1 NM	GP 3.00° TCH 43	
CATEGORY	A	B	C	D		
LPV DA	638-¾		284 (300-¾)			
LNAV/VNAV DA	684-¾		330 (400-¾)			
LNAV MDA	780-¾		426 (500-¾)			
CIRCLING	920-1 565 (600-1)	1060-1 705 (800-1)	1060-2 705 (800-1)	1240-3 885 (900-3)		

TIFTON, GEORGIA  
Amdt 1A 17AUG17

31°26'N-83°29'W

HENRY TIFT MYERS (TMA)

RNAV (GPS) RWY 34

SE-4, 07 AUG 2025 to 04 SEP 2025

SE-4, 07 AUG 2025 to 04 SEP 2025