

WAAS CH 53339 W28A	APP CRS 277°	Rwy Idg TDZE 350 Apt Elev 355
--	------------------------	---

RNAV (GPS) RWY 28

HENRY TIFT MYERS (TMA)

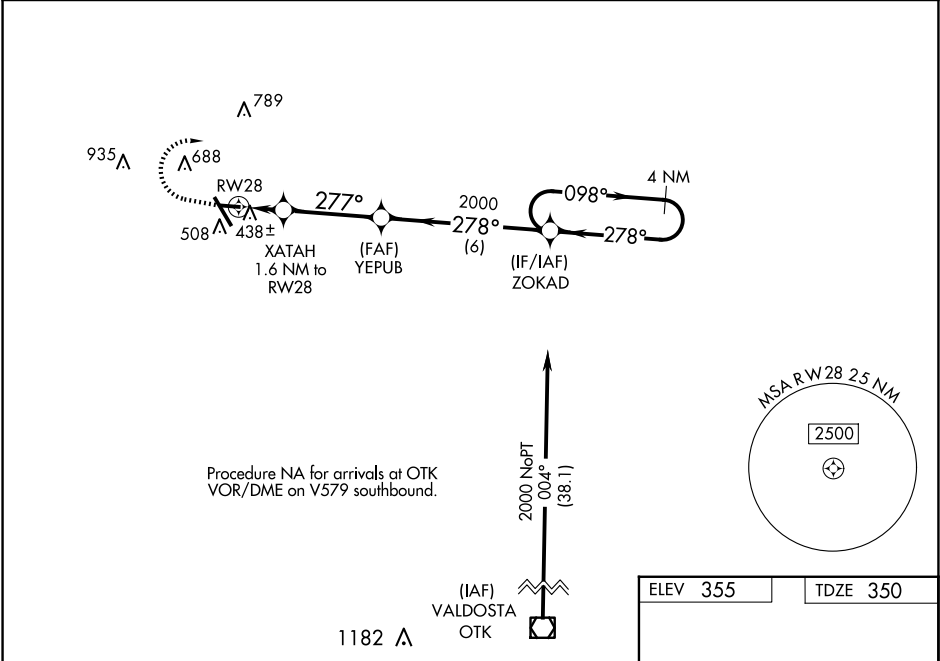
▼

⚠ NA

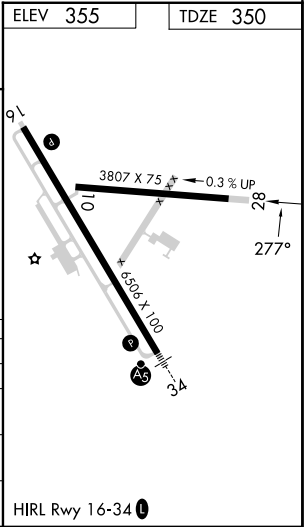
For uncompensated Baro-VNAV systems, LNAV/VNAV NA below -1.5°C (5°F) or above 54°C (130°F). Baro-VNAV and VDP NA when using Moultrie altimeter setting. DME/DME RNP-0.3 NA. When local altimeter setting not received, use Moultrie altimeter setting; increase LPV DA to 673 feet and LNAV/VNAV DA to 689 feet and all MDA 80 feet; increase LPV all Cats and LNAV/VNAV all Cats visibility 1⁄8 mile, LNAV Cat C/D visibility 1⁄4 mile, and increase Circling Cat C visibility 1⁄4 mile. Straight-in minimums NA at night. Circling Rwy 10 NA at night. Helicopter visibility reduction below 3⁄4 SM NA.

MISSED APPROACH: Climb to 800 then climbing right turn to 2000 direct ZOKAD and hold.

AWOS-3PT 118.525	VALDOSTA APP CON ★ 126.6 285.6	UNICOM 122.7 (CTAF) 0
----------------------------	--	---------------------------------



800	2000	ZOKAD		
*LNAV only.				
		XATAH 1.6 NM to RW28	YEPUB	ZOKAD
			2000	278°
				098°
				278°
				2000
				GP 3.00°
				TCH 40
				4 NM Holding Pattern
CATEGORY	A	B	C	D
LPV DA		604-1	254 (300-1)	
LNAV/VNAV DA		628-1	278 (300-1)	
LNAV MDA		720-1	370 (400-1)	
CIRCLING	920-1 565 (600-1)	1060-1 705 (800-1)	1060-2 705 (800-2)	1240-3 885 (900-3)



SE-4, 07 AUG 2025 to 04 SEP 2025

SE-4, 07 AUG 2025 to 04 SEP 2025