

VOR/DME ACO	APP CRS	Rwy Idg	N/A
114.4	289°	TDZE	N/A
Chan 91		Apt Elev	1134

VOR-A

KENT STATE UNIVERSITY (1G3)

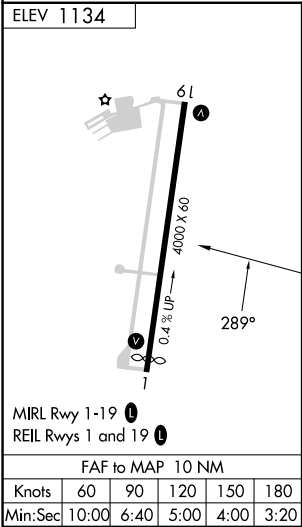
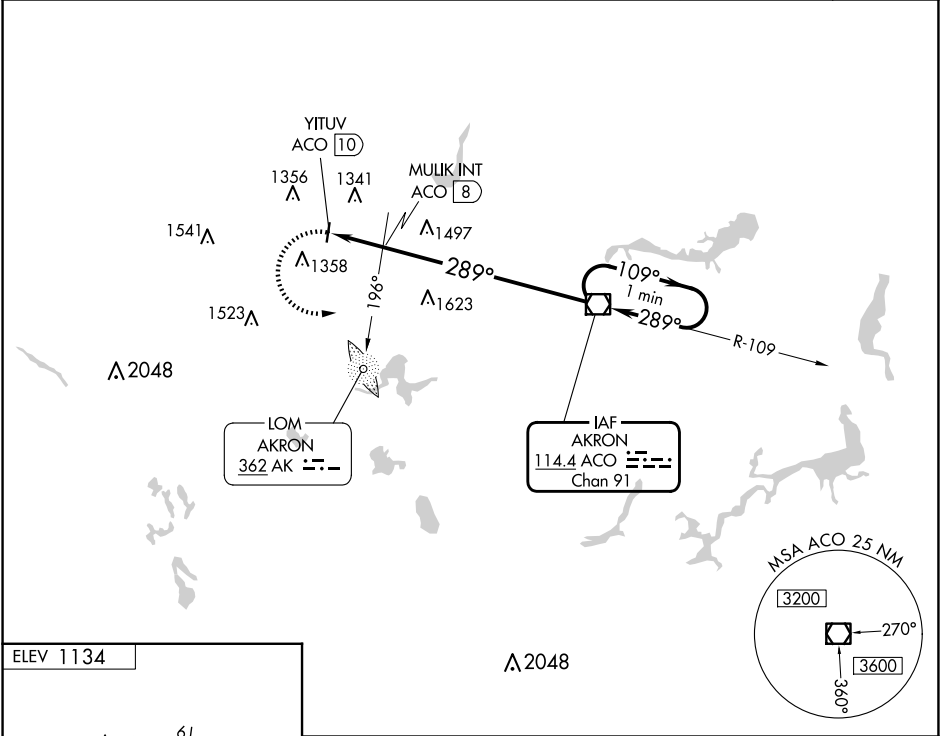
▼

▲ NA

When local altimeter setting not received, use Akron Fulton Intl altimeter setting.

MISSED APPROACH: Climbing left turn to 3000 direct ACO VOR/DME and hold.

AWOS-2	AKR ASOS	CLEVELAND APP CON ★	CLNC DEL	UNICOM	122.9 0
119.15	126.825	125.5 371.875	125.65	122.725 (CTAF)	



3000 ACO		One Minute Holding Pattern			
		MULIK INT ACO (8)			
		YITUV ACO (10)			
		2020			
		2 NM 8 NM			
CATEGORY	A	B	C	D	
CIRCLING	2020-1¼	886 (900-1¼)	2020-2¾	886 (900-2¾)	NA
MULIK FIX MINIMUMS (ADF OR DME REQUIRED)					
CIRCLING	1760-1	626 (700-1)	1760-1¾	626 (700-1¾)	NA