


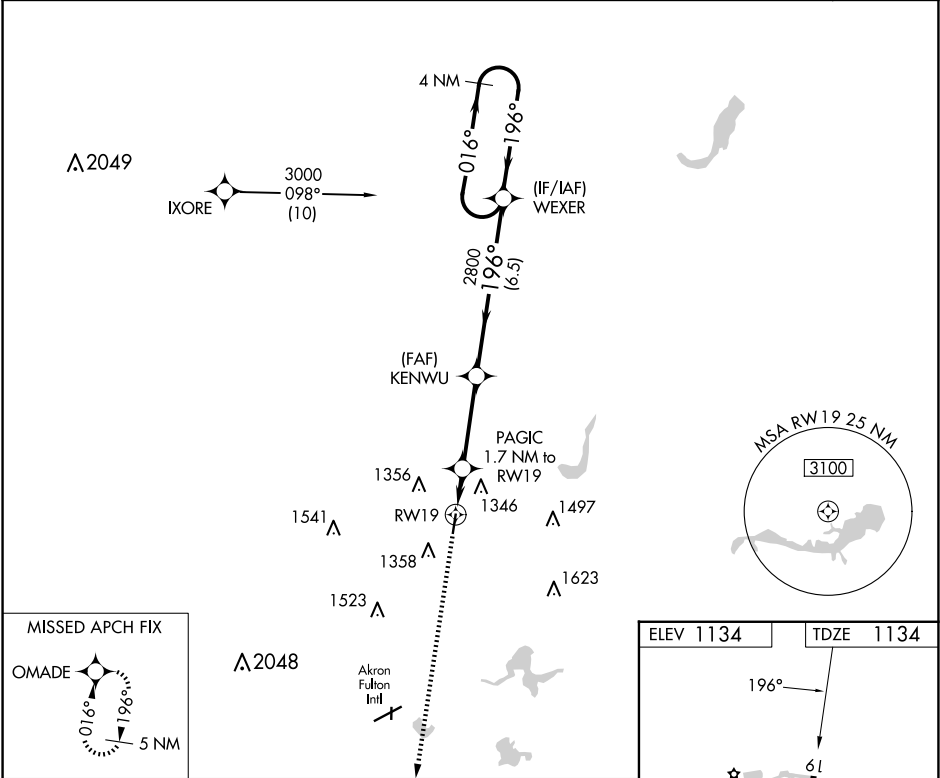
WAAS CH 65701 W19A	APP CRS 196°	Rwy Idg 4000 TDZE 1134 Apt Elev 1134
--	------------------------	---




RNAV (GPS) RWY 19

KENT STATE UNIVERSITY (1G3)

RNP APCH - GPS.		MISSED APPROACH: Climb to 3000 direct OMADE and hold.
 NA	Rwy 19 helicopter visibility reduction below 3/4 SM NA. When local altimeter setting not received, use Akron Fulton Intl altimeter setting.	

AWOS-2 119.15	AKR ASOS 126.825	CLEVELAND APP CON ★ 125.5 371.875	CLNC DEL 125.65	UNICOM 122.725 (CTAF)	122.9 0
-------------------------	----------------------------	---	---------------------------	---------------------------------	----------------



3000		OMADE		VGSI and RNAV glidepath not coincident (VGSI Angle 3.00/TCH 35).			
				WEXER			
*LNAV only.		PACIG 1.7 NM to RW19		KENWU		4 NM Holding Pattern	
		RW19		1700*		016° → 3000	
		1.7 NM		3.3 NM		← 196°	
				2800		196°	
				6.5 NM		GP 3.00° TCH 40	
CATEGORY		A		B		C	
LPV DA		1443-1 309 (400-1)				NA	
LNAV MDA		1580-1 446 (500-1)		1580-1¼ 446 (500-1¼)		NA	

