

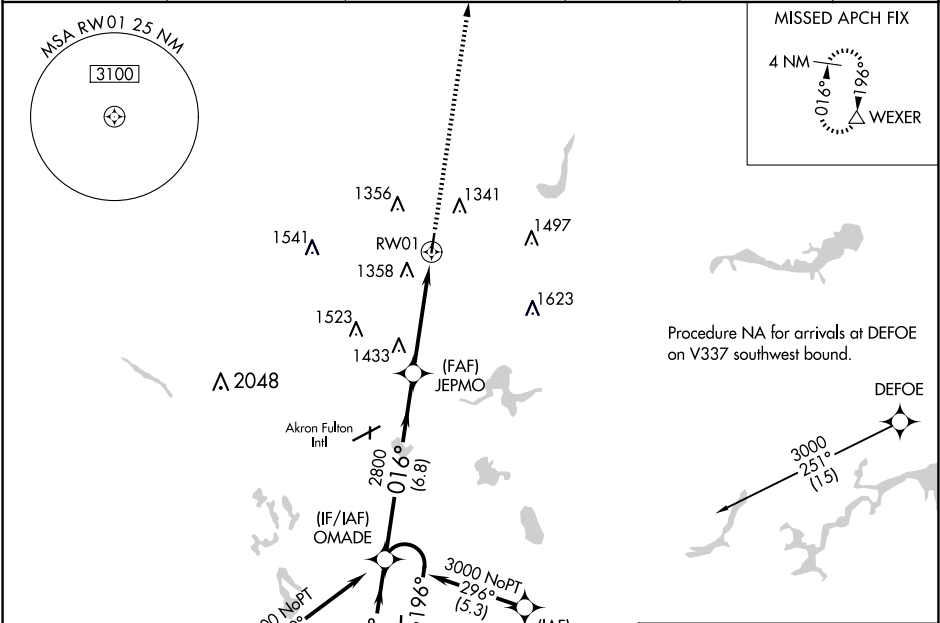
WAAS CH <b>61001</b> <b>W01A</b>	APP CRS <b>016°</b>	Rwy Idg <b>3947</b> TDZE <b>1129</b> Apt Elev <b>1134</b>
--	------------------------	---

RNAV (GPS) RWY 1

KENT STATE UNIVERSITY (1G3)

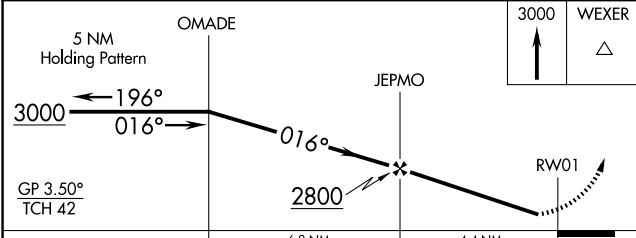
RNP APCH - GPS.		MISSED APPROACH: Climb to 3000 direct WEXER and hold.
NA	Rwy 1 helicopter visibility reduction below ¾ SM NA. When local altimeter setting not received, use Akron Fulton Intl altimeter setting.	

AWOS-2 <b>119.15</b>	AKR ASOS <b>126.825</b>	CLEVELAND APP CON * <b>125.5 371.875</b>	CLNC DEL <b>125.65</b>	UNICOM <b>122.725</b> (CTAF)	<b>122.9</b>
-------------------------	----------------------------	---	---------------------------	---------------------------------	--------------



ELEV <b>1134</b>	TDZE <b>1129</b>
MIRL Rwy 1-19 REIL Rwy 1 and 19	

Procedure NA for arrivals at JOSEF on V72 southwest bound.



CATEGORY	A	B	C	D
LPV DA	1499-1 370 (400-1)			NA
LNAV MDA	1760-1 631 (700-1)	1760-1¾ 631 (700-1¾)		NA

