

LOM AK	APP CRS	Rwy Idg	3947
362	351°	TDZE	1129
		Apt Elev	1134

NDB RWY 1

KENT STATE UNIVERSITY (1G3)

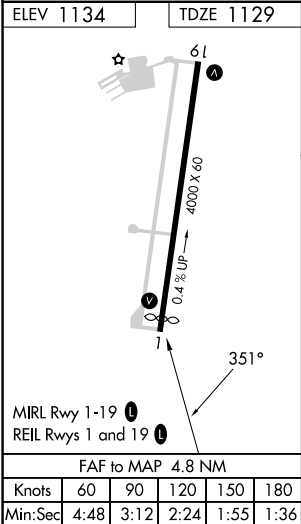
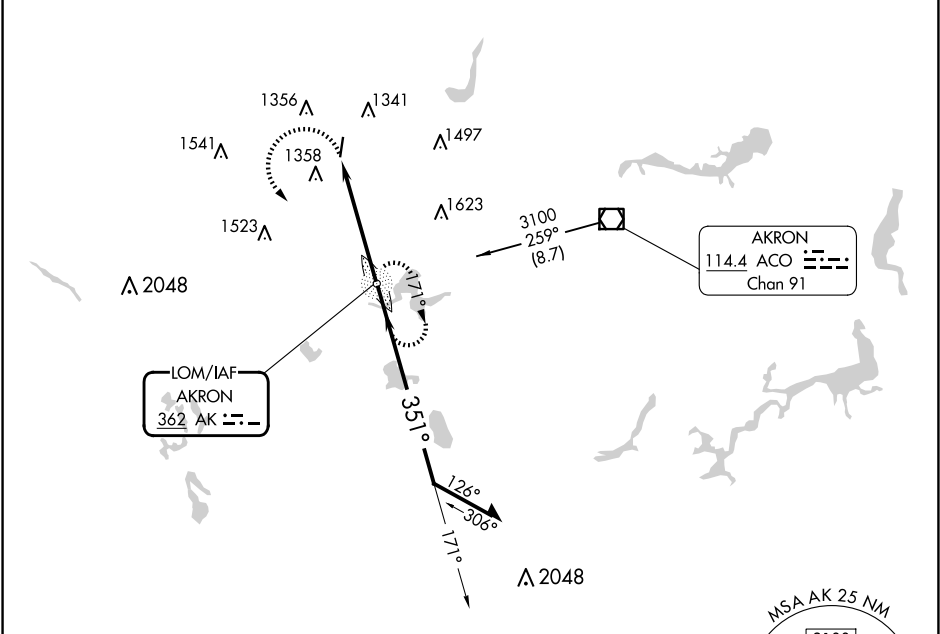
▼

NA

When local altimeter setting not received, use Akron Fulton Intl altimeter setting.
Rwy 1 helicopter visibility reduction below ¾ SM NA.

MISSED APPROACH: Climbing left turn to 3100 direct AKRON LOM and hold.

AWOS-2 119.15	AKR ASOS 126.825	CLEVELAND APP CON★ 125.5 371.875	CLNC DEL 125.65	UNICOM 122.725 (CTAF)	122.9 0
------------------	---------------------	-------------------------------------	--------------------	--------------------------	---------



<div><div>3100</div><div>AK</div></div> <div>VGSI and descent angles not coincident (VGSI Angle 3.50/TCH 42).</div> <div><div>AK LOM</div><div>Remain within 10 NM</div><div>171°</div><div>3100</div><div>351°</div><div>2800</div><div>≤3.25° TCH 42</div><div>4.8 NM</div></div>				
CATEGORY	A	B	C	D
S-1	1760-1	631 (700-1)	1760-1⅞ 631 (700-1⅞)	NA
CIRCLING	1760-1	626 (700-1)	1760-1⅞ 626 (700-1⅞)	NA