

RENTON, WASHINGTON

AL-5396 (FAA)

23222

APP CRS 337°	Rwy Idg TDZE Apt Elev	4742 30 32
------------------------	-----------------------------	---------------------------------------

RNAV (GPS) RWY 34

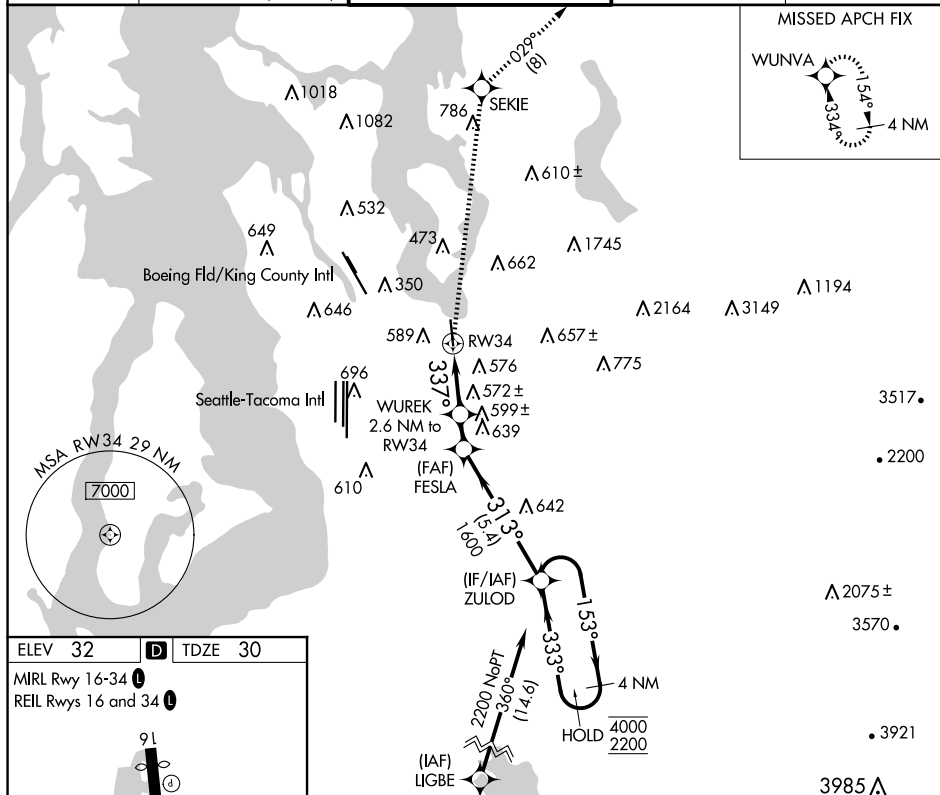
RENTON MUNI (RNT)

RNP APCH-GPS.

T Circling NA west of Rwy 16-34. Rwy 34 helicopter visibility reduction below
A 1 SM NA. Straight-in Rwy 34 at night, Circling Rwy 34 at night, operational
 VGSJ required. remain on or above VGSJ glidepath until threshold.

MISSED APPROACH: Climb to 3000 direct
SEKIE and on track 029° to WUNVA
and hold.

ATIS 126.95	SEATTLE APP CON 123.9 338.2 (RWY 16) 125.9 306.9 (RWY 34)	RENTON TOWER* 124.7 (CTAF) 0 256.9	GND CON 121.6 256.9	UNICOM 122.95
-----------------------	---	--	-------------------------------	-------------------------



ELEV 32	D	TDZE 30
---------	----------	---------

MIRL Rwy 16-34 **I**
 REIL Rws 16 and 34 **I**

The diagram shows a runway layout with the following features:

- Runway:** A thick black line representing the runway, labeled "91" at the top and "34" at the bottom.
- MIRL:** A line of lights along the runway, labeled "5382 X 200".
- REIL:** A line of lights along the runway, labeled "5382 X 200".
- TWR:** A tower symbol (a star) labeled "TWR 98".
- Other Lights:** A "P" in a circle, a "D" in a circle, and a "4" in a circle.
- Direction:** An arrow pointing upwards, labeled "337°".

3000 ↑	SEKIE ☼	tr 029°	WUNVA ☼	FESLA	ZULOD	4 NM Holding Pattern
				WUREK 2.6 NM to RW34 $\leq 3.75^\circ$ TCH 56 337° \times 313° 1100 153° \rightarrow 4000 333° \leftarrow 2200		
RW34 2.6 NM 1.3 NM 5.4 NM						
CATEGORY	A	B	C	D		
LNAV MDA	840-1 810 (900-1)	840-1¼ 810 (900-¼)	840-2½ 810 (900-2½)	NA		
C CIRCLING	860-1¼ 828 (900-¼)	920-1¼ 888 (900-¼)	1000-3 968 (1000-3)	NA		

RENTON, WASHINGTON

Amdt 1 24MAR22

47°30'N-122°13'W

RENTON MUNI (RNT)

RNAV (GPS) RWY 34

NW-1, 07 AUG 2025 to 04 SEP 2025