

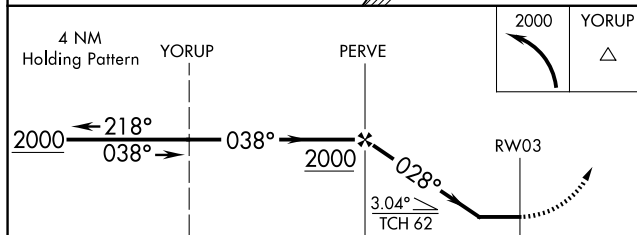
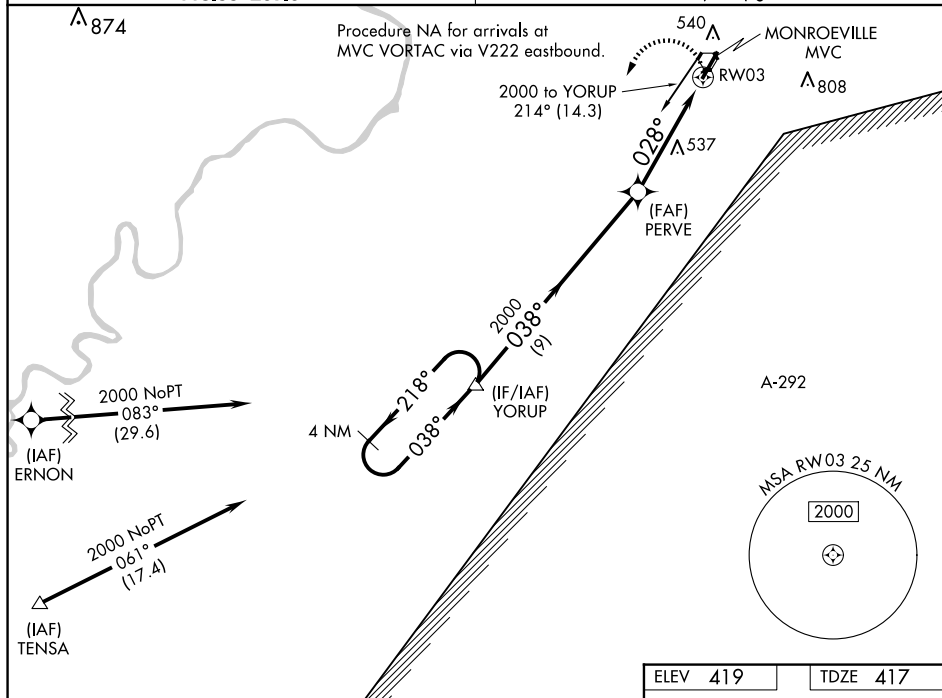
23306

RNAV (GPS) RWY 3  
MONROE COUNTY AEROPLEX (MVC)

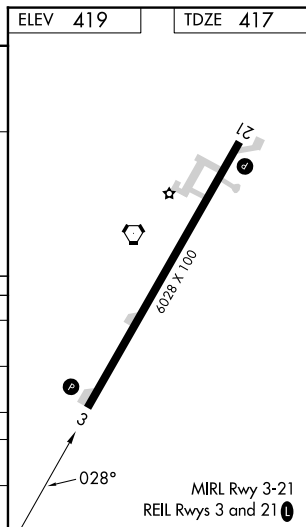
**T** Obtain local altimeter setting on CTAF; when not received, use Evergreen Rgnl/Middleton Fld altimeter setting. Procedure NA at night.  
**A** NA Rwy 3 helicopter visibility reduction below 1 SM NA.

MISSED APPROACH:  
Climbing left turn to 2000  
direct YORUP and hold.

UNICOM  
123.0 (CTAF) **L**



CATEGORY	A	B	C	D
RNAV MDA	940-1 523 (600-1)		940-1½ 523 (600-1½)	
<b>C</b> CIRCLING	940-1 521 (600-1)		940-1½ 521 (600-1½)	1120 2¼ 701(800-2¼)
EVERGREEN RGNL/MIDDLETON FLD ALTIMETER SETTING MINIMUMS				
RNAV MDA	1000-1 583 (600-1)		1000-1¾ 583 (600-1¾)	
<b>C</b> CIRCLING	1000-1 581 (600-1)		1000-1¾ 581 (600-1¾)	1180-2½ 761(800-2½)



MONROE COUNTY AEROPLEX (MVC)  
RNAV (GPS) RWY 3

SE-4, 07 AUG 2025 to 04 SEP 2025