

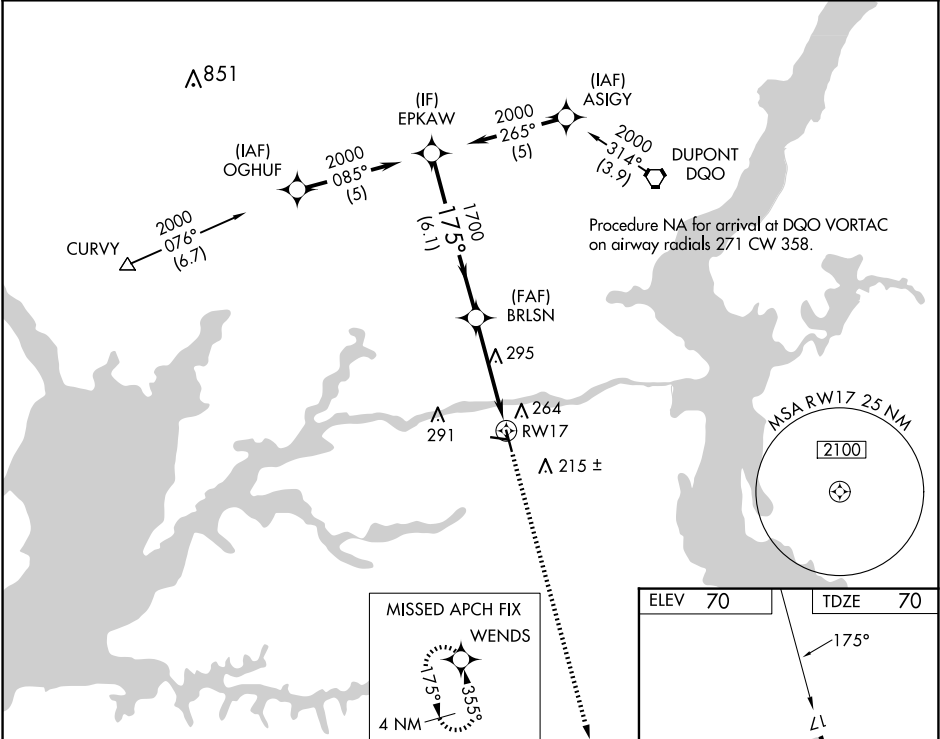
WAAS CH 49002 W17A	APP CRS 175°	Rwy Idg TDZE Apt Elev 4488 70 70
--	------------------------	--

RNAV (GPS) RWY 17

SUMMIT (EVY)

RNP APCH - GPS.		MISSED APPROACH: Climb to 2000 direct WENDS and hold.
▼ Procedure NA at night. Rwy 17 helicopter visibility reduction below 1 SM NA. ▲ For uncompensated Baro-VNAV systems, LNAV/VNAV NA below -15°C or above 54°C.		

AWOS-3 132.325	PHILADELPHIA APP CON 118.35 323.1	UNICOM 122.725 (CTAF)	123.5
--------------------------	---	---------------------------------	--------------



EPKAW		VGSi and RNAV glidepath not coincident (VGSi Angle 3.00/TCH 41).		2000	WENDS
GP 3.53° TCH 56		1700	BRLSN	1700	RW17
6.1 NM		4.2 NM			
CATEGORY	A	B	C	D	
LPV DA	541-1 $\frac{3}{8}$		471 (500-1 $\frac{3}{8}$)		NA
LNNAV/VNAV DA	619-1 $\frac{3}{8}$		549 (600-1 $\frac{3}{8}$)		NA
LNNAV MDA	560-1		490 (500-1)		NA
			560-1 $\frac{3}{8}$ 490 (500-1 $\frac{3}{8}$)		

