

WAAS CH 77633 W35A	APP CRS 353°	Rwy Idg TDZE Apt Elev	5701 2918 2918
--	------------------------	-----------------------------	---

RNAV (GPS) RWY 35

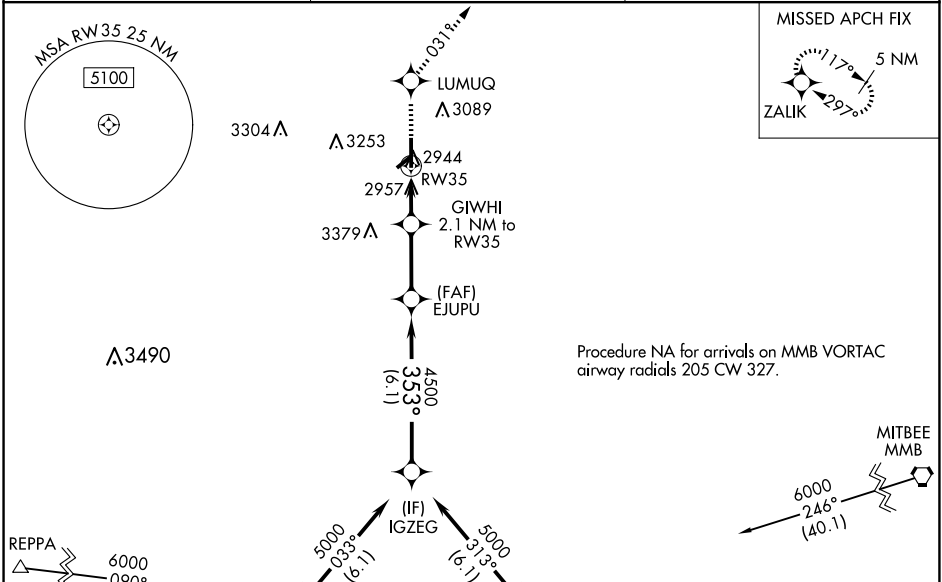
PERRYTON OCHILTREE COUNTY (PYX)

▼ Baro-VNAV and VDP NA when using Gage altimeter setting. For uncompensated Baro-VNAV systems, LNAV/VNAV NA below -20°C (-4°F) or above 54°C (130°F).

⚠ When local altimeter setting not received, use Gage altimeter setting and increase all DAs 208 feet and MDA 220 feet; increase LPV and LNAV/VNAV Cats A and B visibility ¾ miles and Circling Cat B visibility ¼ mile. DME/DME RNP -0.3 NA. Helicopter visibility reduction below ¾ SM NA. Circling NA to Rwy 4 and 22.

MISSED APPROACH: Climb to 6000 direct LUMUQ and on track 031° to ZALIK and hold.

AWOS-3 118.175	KANSAS CITY CENTER 126.95 379.2	UNICOM 122.8 (CTAF) 0
--------------------------	---	---------------------------------



VGSI and RNAV glidepath not coincident (VGSI Angle 3.50/TCH 23).

IGZEG

GP 3.00° TCH 40

IGZEG

EJUPU

GIWHI 2.1 NM to RW35

*1 NM to RW35

RW35

*LNNAV only.

*3620

6.1 NM

2.8 NM

1.1 NM

1 NM

CATEGORY	A	B	C	D
LPV DA	3168-7/8	250 (300-7/8)		NA
LNAV/VNAV DA	3168-7/8	250 (300-7/8)		NA
LNAV MDA	3320-1	402 (500-1)		NA
CIRCLING	3320-1 402 (500-1)	3580-1 662 (700-1)		NA

ELEV 2918

TDZE 2918

MIRL Rwy 17-35 0

The detailed view shows the runway (RWY 35) and the approach path. Key features include:

- Runway:** 3500' x 75'.
- Obstacles:** 3280' x 144'.
- Altitudes:** 3530' to RW35, 3570'.
- Navigation Aids:** ZALIK, ZIRHI, and ZIRHI (IAF).