

PERRYTON, TEXAS

AL-5391 (FAA)

22251

WAAS CH 86833 W17A	APP CRS 173°	Rwy Idg 5701 TDZE 2918 Apt Elev 2918
--	------------------------	---

RNAV (GPS) RWY 17
PERRYTON OCHILTREE COUNTY (PYX)

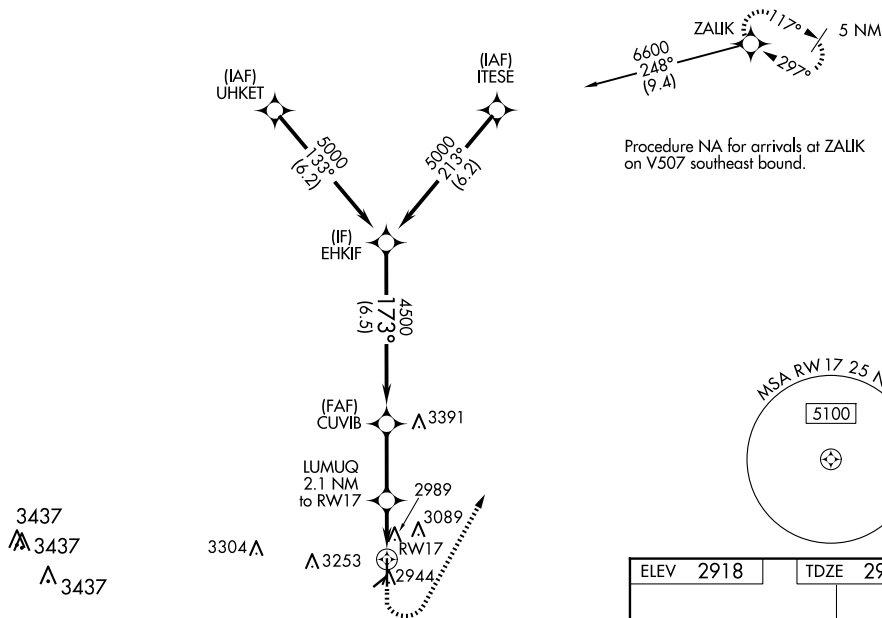
RNP APCH - GPS.



Circling NA to Rwy 4 and 22. For uncompensated Baro-VNAV systems, LNAV/VNAV NA below -20°C or above 54°C.

MISSED APPROACH: Climb to 3400 then climbing left turn to 6000 direct ZALIK and hold.

AWOS-3 118.175	KANSAS CITY CENTER 126.95 379.2	UNICOM 122.8 (CTAF) 0
--------------------------	---	---------------------------------



Procedure NA for arrivals at ZALIK
on V507 southeast bound.

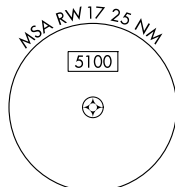
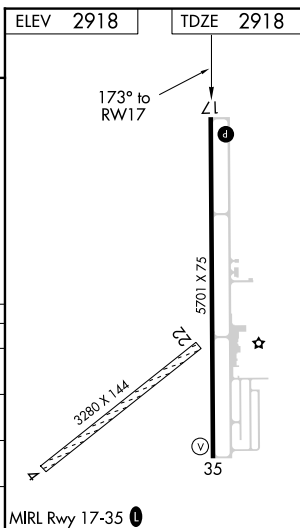


Diagram illustrating the VGSB (VGSB 3.00° TCH 40) and associated navigation aids:

- Navigation Aids:** 3400, 6000, ZALIK, LUMUQ (2.1 NM to RW17), CUVIB (4500), EHKIF (5000).
- Distances:** 0.9 NM to RW17, 1.2 NM, 2.8 NM, 6.5 NM.
- Angles:** 173°, GP 3.00° TCH 40.



PERRYTON, TEXAS
Orig-D 14JUL22

36°25'N-100°45'W

PERRYTON OCHILTREE COUNTY (PYX)
RNAV (GPS) RWY 17

SC-2, 07 AUG 2025 to 04 SEP 2025