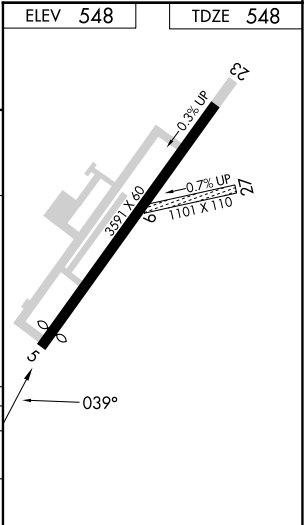
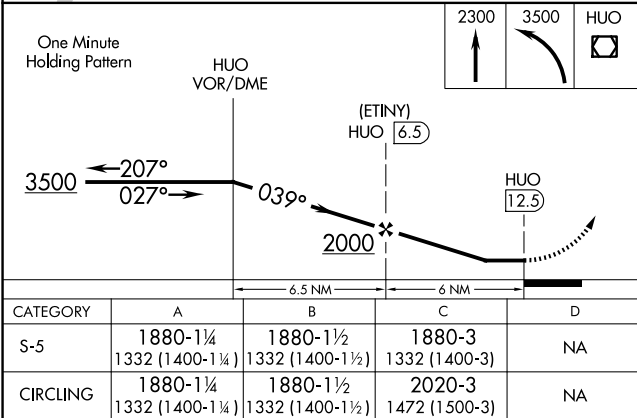
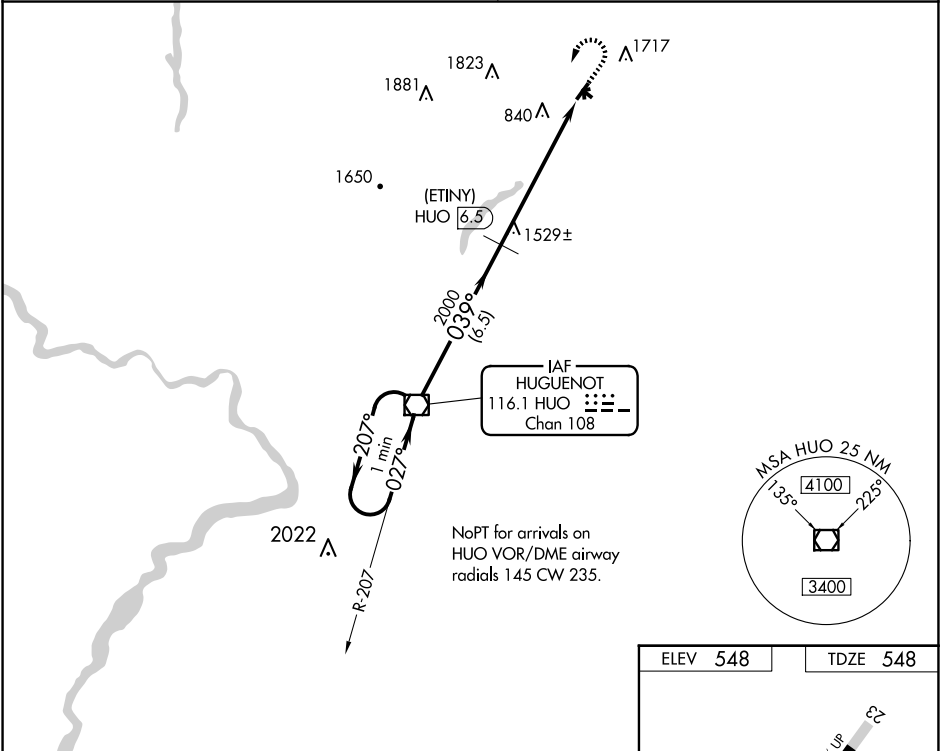


VOR/DME HUO	APP CRS	Rwy Idg	3358
116.1	039°	TDZE	548
Chan 108		Apt Elev	548

VOR/DME or GPS RWY 5

WURTSBORO/SULLIVAN COUNTY (N82)

<div><div>▼</div><div>NA</div><div>Obtain local altimeter setting on CTAF, when not received, procedure NA. Procedure not authorized at night. Circling Cat B/C NA north of Rwy 9/27. Helicopter visibility reduction below 1 SM NA.</div></div>	MISSED APPROACH: Climb to 2300 then climbing left turn to 3500 direct HUO VOR/DME and hold.
NEW YORK APP CON 132.75 363.1	UNICOM 122.8 (CTAF)



NE-2, 07 AUG 2025 to 04 SEP 2025

NE-2, 07 AUG 2025 to 04 SEP 2025