

WAAS CH 40030 W26A	APP CRS 256°	Rwy Ldg 2810 TDZE 523 Apt Elev 523
--	------------------------	---

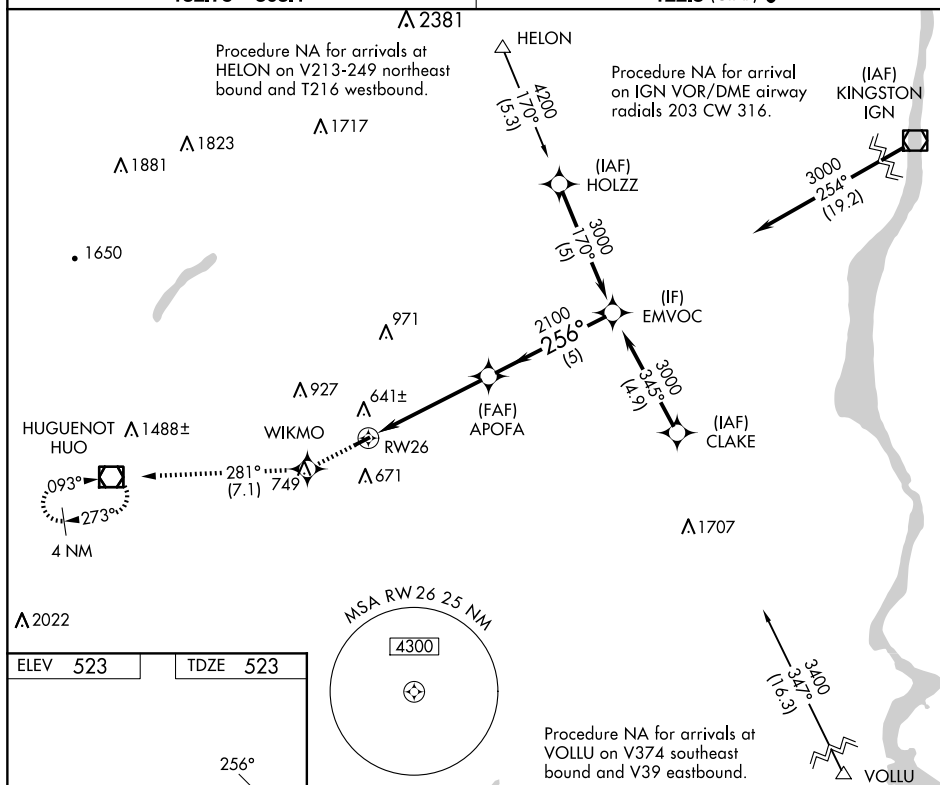
RNAV (GPS) RWY 26
RANDALL (06N)

RNP APCH.

T Procedure NA at night. Rwy 26 helicopter visibility reduction below 1 SM NA.
A NA Use Newburgh altimeter setting; when not received, use Montgomery altimeter setting.

MISSED APPROACH: Climb to 3500 direct WIKMO and on track 281° to HUO VOR/DME and hold, continue climb-in-hold to 3500.

NEW YORK APP CON	
132.75	363.1

UNICOM
122.8 (CTAF) **L**

CATEGORY	A	B	C	D
LP MDA	1020-1 497 (500-1)	NA		
LNAV MDA	1060-1 537 (600-1)	NA		
CIRCLING	1080-1 557 (600-1)	NA		

RNAV (GPS) RWY 26