

LOC/DME I-SQI 111.5 Chan 52	APP CRS 072°	Rwy Ldg 6499 TDZE 648 Apt Elev 648
---	------------------------	---

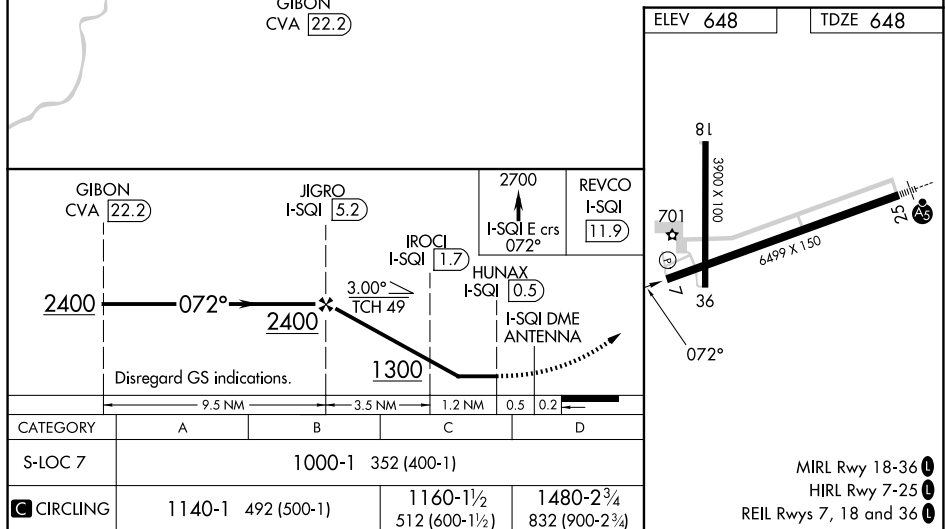
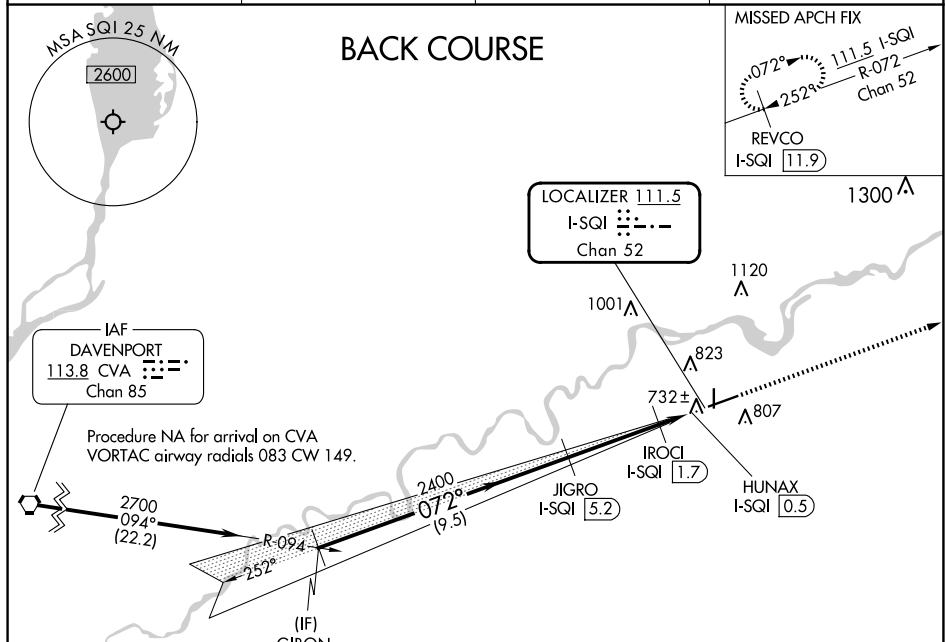
LOC BC RWY 7
WHITESIDE COUNTY/JOS H BITTORE FLD (SQI)

DME required.

T	Rwy 7 helicopter visibility reduction below $\frac{3}{4}$ SM NA.
A	NA

MISSED APPROACH: Climb to 2700 on I-SQI localizer east course 072° to REVCO/I-SQI 11.9 DME and hold.

AWOS-3PT 119.175	ROCKFORD APP CON 126.0 327.0	CLNC DEL 128.0	UNICOM 123.0 (CTAF) 1
----------------------------	--	--------------------------	---------------------------------



STERLING/ROCKFALLS, ILLINOIS
Amdt 7A 12JUN25

WHITESIDE COUNTY/JOS H BITTORF FLD (SQI)
LOC BC RWY 7

41°45'N-89°41'W

EC-3, 07 AUG 2025 to 04 SEP 2025

EC-3, 07 AUG 2025 to 04 SEP 2025