

LOC/DME I-SQI

111.5

Chan 52

APP CRS

252°

Rwy Idg

6499

TDZE

647

Apt Elev

648

ILS or LOC RWY 25

WHITESIDE COUNTY/JOS H BITTORF FLD (SQI)

DME required. Radar required for procedure entry.

MALSR

MISSED APPROACH: Climbing right turn to 3000 on CVA VORTAC R-069 to VOSUY/CVA 47.1 DME and hold.

AWOS-3PT

119.175

ROCKFORD APP CON

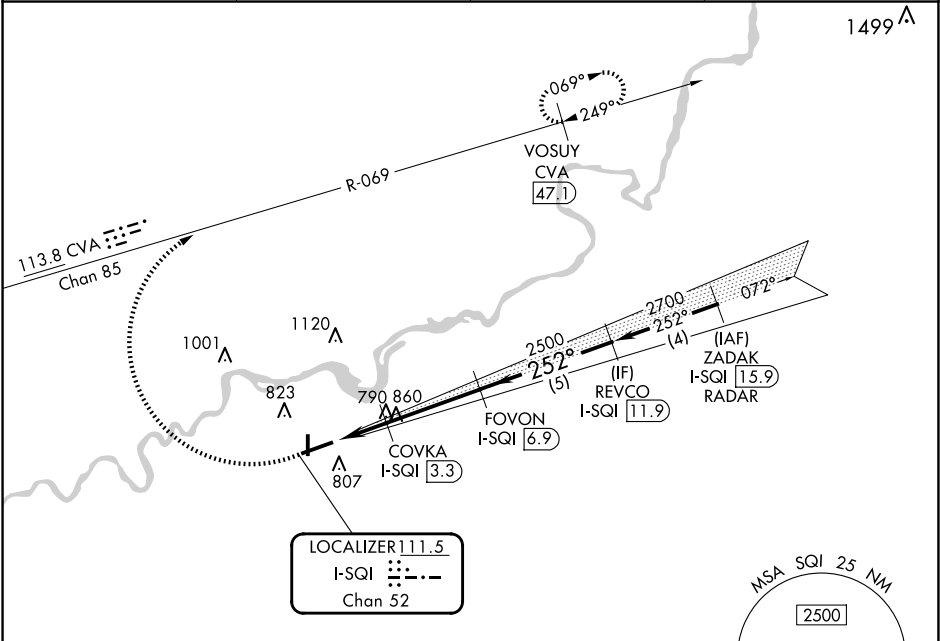
126.0 327.0

CLNC DEL

128.0

UNICOM

123.0 (CTAF) 0



ELEV 648

TDZE 647

Diagram showing the HIRL (High Intensity Runway Lights) and MRL (Medium Intensity Runway Lights) for RWY 25 and RWY 7-25. The HIRL for RWY 25 is 3900 x 100, and the MRL for RWY 7-25 is 6499 x 150. The diagram also shows the 252° glideslope and the 2500' obstacle.

Category	A	B	C	D
S-ILS 25	847-1/2 200 (200-1/2)			
S-LOC 25	1100-1/2 453 (500-1/2)		1100-7/8 453 (500-7/8)	
CIRCLING	1140-1 492 (500-1)		1160-1 1/2 512 (600-1 1/2) 1480-2 3/4 832 (900-2 3/4)	

EC-3, 07 AUG 2025 to 04 SEP 2025

EC-3, 07 AUG 2025 to 04 SEP 2025