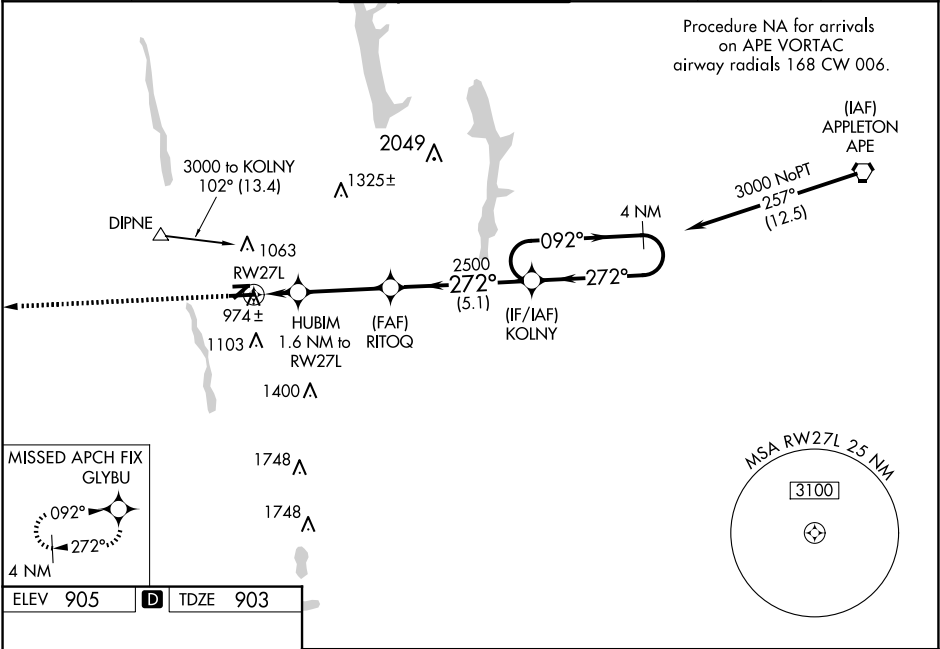


WAAS CH <b>45720</b> <b>W27A</b>	APP CRS <b>272°</b>	Rwy Idg TDZE Apt Elev	<b>5004</b> <b>903</b> <b>905</b>
--	------------------------	-----------------------------	---

RNAV (GPS) RWY 27L  
OHIO STATE UNIVERSITY (OSU)

RNP APCH.	Baro-VNAV NA when using John Glenn Columbus Intl altimeter setting. For uncompensated Baro-VNAV systems, LNAV/VNAV NA below -16°C or above 38°C. When local altimeter setting not received, use John Glenn Columbus Intl altimeter setting; increase LPV DA to 1178 feet; increase LNAV/VNAV DA to 1224 feet and all visibilities ½ SM; increase all MDAs 40 feet and visibility LNAV Cat C ¼ SM and Cat D ¼ SM, and Circling Cat D ¼ SM. Circling Rwy 23 NA at night. Rwy 27L helicopter visibility reduction below ¾ SM NA.	MISSED APPROACH: Climb to 3200 direct GLYBU and hold.
-----------	---	--

ATIS <b>121.35</b>	COLUMBUS APP CON <b>125.95 317.775</b>	STATE TOWER ★ <b>118.8 (CTAF) 0 254.325</b>	GND CON <b>121.7</b>	CLNC DEL <b>121.7</b>	UNICOM <b>122.95</b>
-----------------------	---	--	-------------------------	--------------------------	-------------------------



<p>REIL Rwy 27L HIRL Rwy 9R-27L MIRL Rwy 9L-27R</p>	3200 GLYBU VGSI and RNAV glidepath not coincident (VGSI Angle 3.00/TCH 28)	4 NM Holding Pattern KOLNY			
	*LNAV only.	HUBIM 1.6 NM to RW27L	RITOQ 2500	272°	092° 3000
	RW27L	*1420	2500	272°	GP 3.00° TCH 45
	1.6 NM	3.3 NM	5.1 NM		
	CATEGORY	A	B	C	D
LPV DA		1153-1	250 (300-1)		
LNAV/VNAV DA		1199-1	296 (300-1)		
LNAV MDA	1280-1	377 (400-1)	1280-1½	377 (400-1½)	
CIRCLING	1380-1 475 (500-1)	1420-1 515 (600-1)	1420-1½ 515 (600-1½)	1680-2½ 775 (800-2½)	