

LOC I-OSU <u>108.5</u>	APP CRS 092°	Rwy Idg TDZE Apt Elev	5004 905 905
----------------------------------	------------------------	-----------------------------	---

ILS or LOC RWY 9R
OHIO STATE UNIVERSITY (OSU)

ADF required for procedure entry. ADF required.

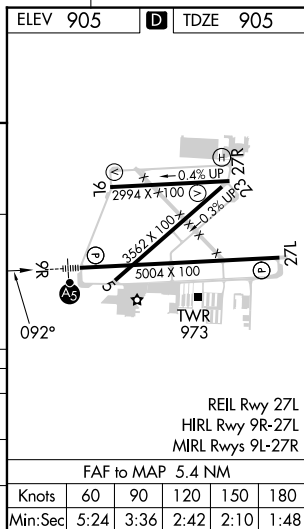
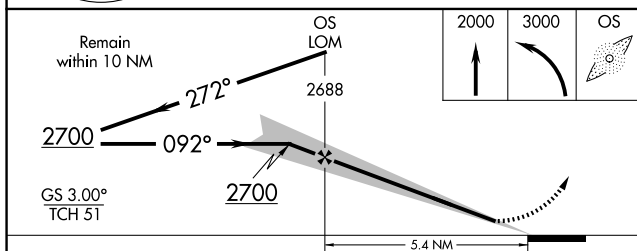
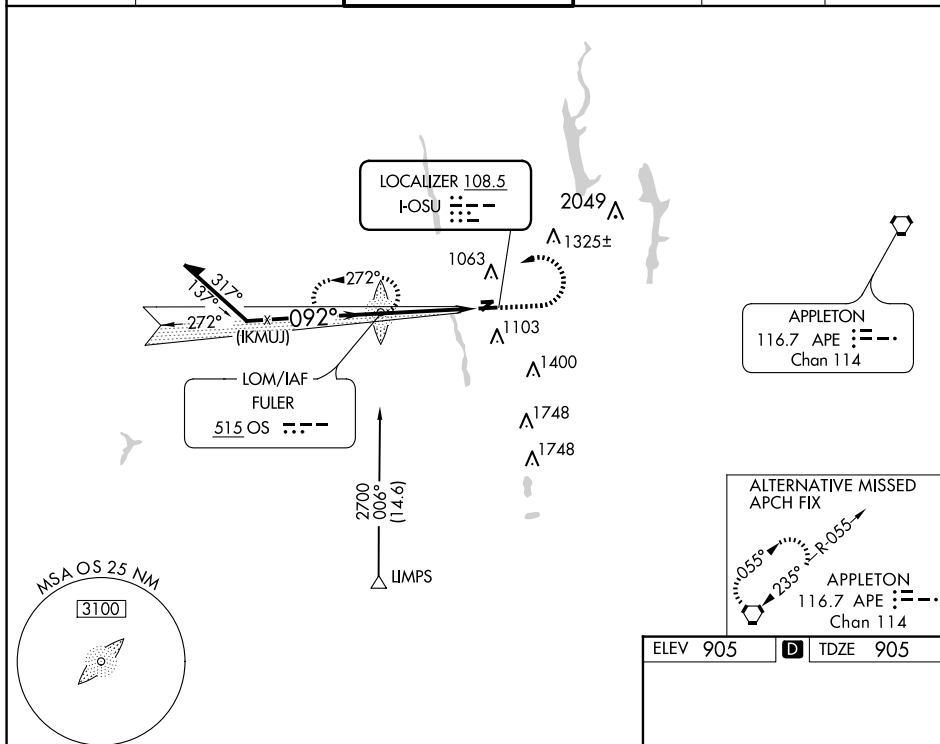
T When local altimeter setting not received, use John Glenn Columbus Intl altimeter setting; increase DA to 1140 feet; increase all MDAs 40 feet and S-9R visibility **A** Cat C $\frac{1}{8}$ SM and Cat D and Circling Cat D $\frac{1}{4}$ SM. Circling Rwy 23 NA at night.

MALSR



MISSED APPROACH: Climb to 2000 then climbing left turn to 3000 direct FULER LOM and hold.

ATIS 121.35	COLUMBUS APP CON 125.95 317.775	STATE TOWER ★ 118.8 (CTAF) 0 254.325	GND CON 121.7	CLNC DEL 121.7	UNICOM 122.95
----------------	------------------------------------	---	------------------	-------------------	------------------



CATEGORY	A	B	C	D
S-ILS 9R	1105-1/2 200 (200-1/2)			
S-LOC 9R	1420-1/2 515 (600-1/2)		1420-1 515 (600- 1)	
CIRCLING	1420-1 515 (600-1)		1420-1 1/2 515 (600-1 1/2)	1680-2 1/2 775 (800-2 1/2)