

LOC/DME I-LWR
110.7
Chan **44**

APP CRS
180°

Rwy Idg **6003**
TDZE **213**
Apt Elev **213**

ILS or LOC RWY 17
WEST MEMPHIS MUNI (A W M)

DME or RADAR required.

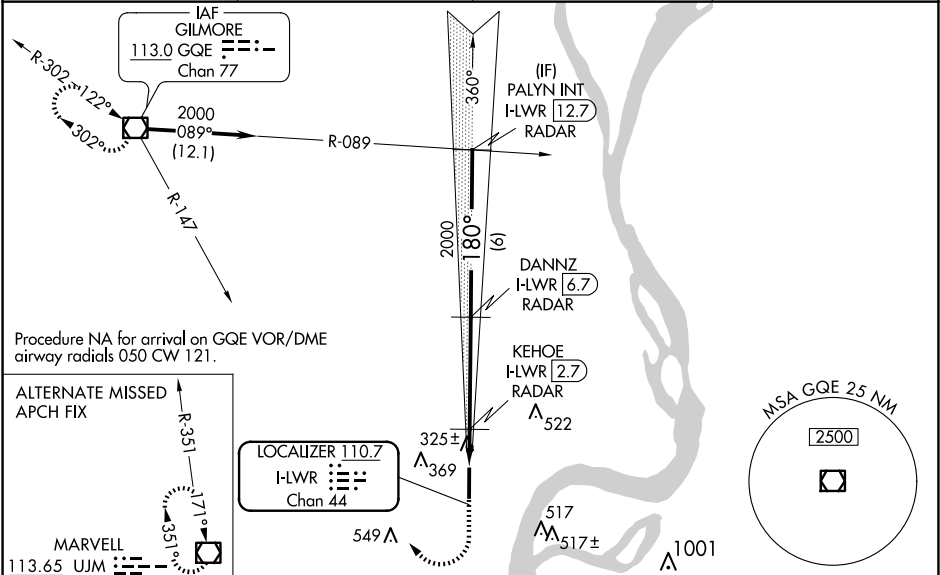
MALSR

NA

For inop ALS, increase S-LOC 17 Cat C/D visibility to 1½ SM and KEHOE FIX MINIMUMS S-LOC 17 Cats C/D visibility to 1 SM.

MISSED APPROACH: Climb to 1000 then climbing right turn to 2000 on GQE VOR/DME R-147 to GQE VOR/DME and hold.

ASOS 118.175	MEMPHIS APP CON 119.1 291.6	CLNC DEL 121.7	UNICOM 123.05 (CTAF) 0
------------------------	---------------------------------------	--------------------------	---



	ELEV 213	TDZE 213
	1000	2000
	GQE	GQE R-147
	DANNZ I-LWR 6.7 RADAR	PALYN INT I-LWR 12.7 RADAR
	KEHOE I-LWR 2.7 RADAR	325±
	549	517
	669	669
	1001	
	180°	180°
	680*	2000
	1.4 NM	4 NM
	6 NM	GS 3.00° TCH 51
CATEGORY	A	B
S-ILS 17	413-½	200 (200-½)
S-LOC 17	680-½	467 (500-½)
CIRCLING	680-1	740-1
	467 (500-1)	527 (600-1)
	800-1½	920-2¼
	587 (600-1½)	707 (800-2¼)
	KEHOE FIX MINIMUMS	
S-LOC 17	580-½	367 (400-½)
CIRCLING	640-1	740-1
	427 (500-1)	527 (600-1)
	800-1½	920-2¼
	587 (600-1½)	707 (800-2¼)

MIRL Rwy 17-35

REIL Rwy 35

FAF to MAP 5.5 NM

Knots

60 90 120 150 180

Min:Sec

5:30 3:40 2:45 2:12 1:50