
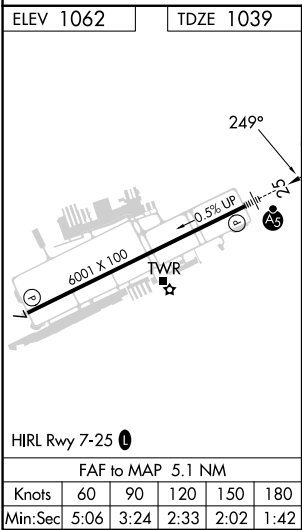
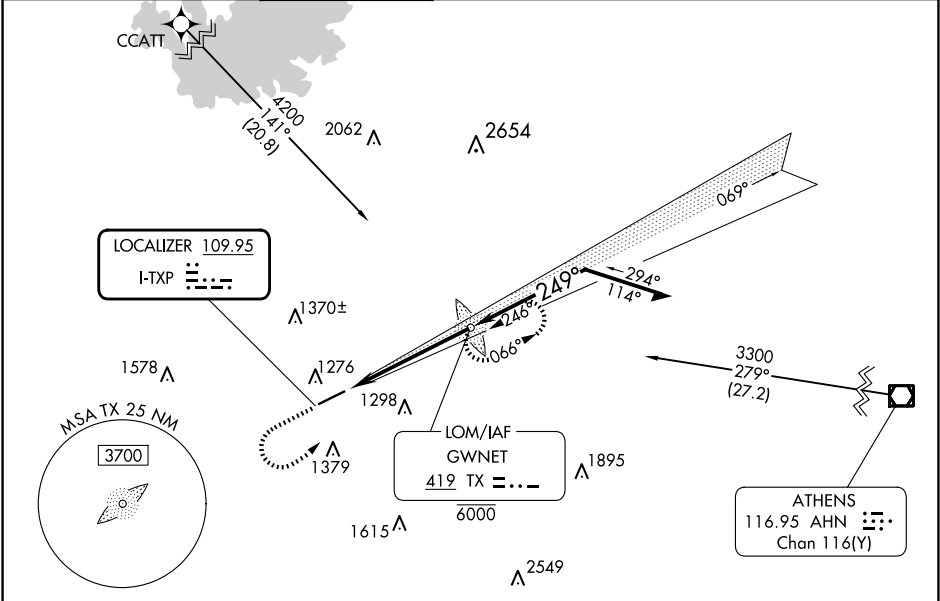


| | | |
|----------------------------|------------------------|--|
| LOC I-TXP 109.95 | APP CRS 249° | Rwy Ldg TDZE Apt Elev 6001 1039 1062 |
|----------------------------|------------------------|--|

ILS or LOC RWY 25
GWINNETT COUNTY/BRISCOE FLD (LZU)

| | | | | | | |
|---|------------------------------------|------------------------------------|------------------|-------------------|--|---|
| RNAV 1 - GPS. From CCATT. | | | | | MALSR  | MISSED APPROACH: Climb to 2400 then climbing left turn to 3100 direct GWNET LOM and hold. |
| ADF required. | | | | | | |
| <div>▼ Inop table does not apply to S-ILS 25. Autopilot coupled approach NA below 1700. Rwy 25 helicopter visibility reduction below ¾ SM NA. Circling Rwy 7 NA at night. For inop ALS, increase S-LOC 25 Cat A/B visibility to 1 SM and Cat C/D visibility to 1½ SM.</div> | | | | | | |
| ATIS 132.275 | ATLANTA APP CON 126.975 239.275 | GWINNETT TOWER ★ 124.1 (CTAF) 0 | GND CON 121.8 | CLNC DEL 121.8 | CLNC DEL 134.0 (When twr closed) | UNICOM 123.05 |



| | | | |
|----------|--|--|--|
| CATEGORY | | | |
| S-ILS 25 | | | |
| S-LOC 25 | | | |
| CIRCLING | | | |

SE-4, 07 AUG 2025 to 04 SEP 2025

SE-4, 07 AUG 2025 to 04 SEP 2025