

WAAS CH 90307 W20A	APP CRS 203°	Rwy Idg TDZE Apt Elev	5197 827 827
--	------------------------	-----------------------------	---

RNAV (GPS) RWY 20

JOHN F KENNEDY MEML (ASX)

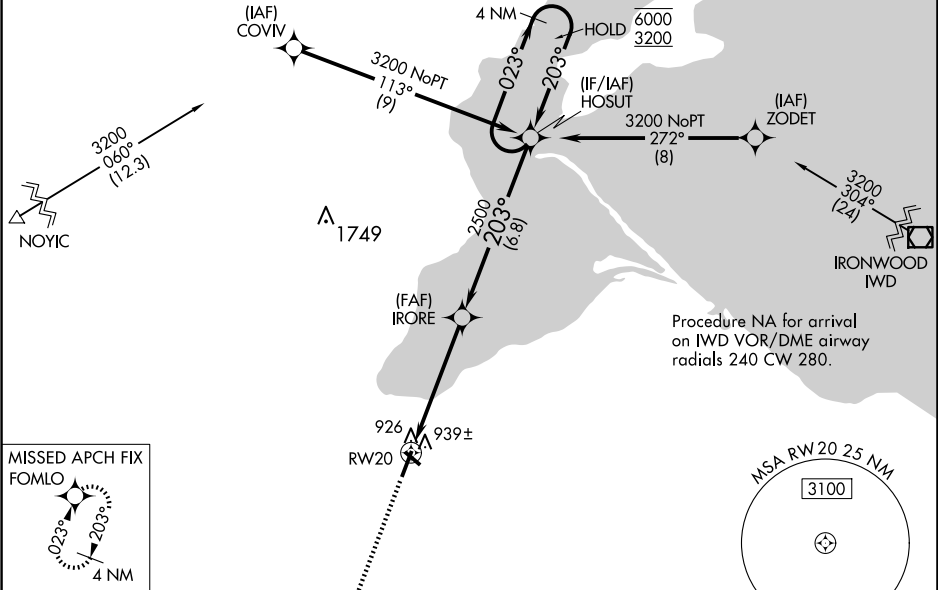
RNP APCH.

⚠

Baro-VNAV and VDP NA when using Ironwood altimeter setting. Rwy 20 helicopter visibility reduction below ¾ SM NA. For uncompensated Baro-VNAV systems, LNAV/VNAV NA below -22°C or above 54°C. When local altimeter setting not received, use Ironwood altimeter setting: increase LPV DA to 1260 feet and all visibilities ½ SM; increase LNAV/VNAV DA to 1256 feet and all visibilities ½ SM; increase all MDA 140 feet and LNAV visibility Cat C/D ¾ SM and Circling visibility Cat C/D ½ SM.

MISSED APPROACH:
Climb to 3600 direct FOMLO and hold.

ASOS 126.775	MINNEAPOLIS CENTER 126.45 276.4	GCO 122.25	UNICOM 122.8 (CTAF)
------------------------	---	----------------------	-------------------------------



ELEV 827

TDZE 827

MIRL Rwy 20 and 13-31

REIL Rwy 20

5197 X 100

3498 X 75

0.4% UP

5

3600 FOMLO				
* LNAV only				
HOSUT Holding Pattern				
* 1.1 NM to RW20				
IRORE 2500				
RW20				
1.1 NM 4.1 NM 6.8 NM				
CATEGORY	A	B	C	D
LPV DA		1128-1	301 (400-1)	
LNAV/VNAV DA		1124-1	297 (300-1)	
LNAV MDA		1200-1	373 (400-1)	
CIRCLING	1240-1 413 (500-1)	1280-1 453 (500-1)	1440-1¾ 613 (700-1¾)	1560-2¼ 733 (800-2¼)