

VOR/DME GGW 113.9 Chan 86	APP CRS 133°	Rwy Idg 5001 TDZE 2294 Apt Elev 2296
---	------------------------	---

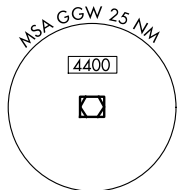
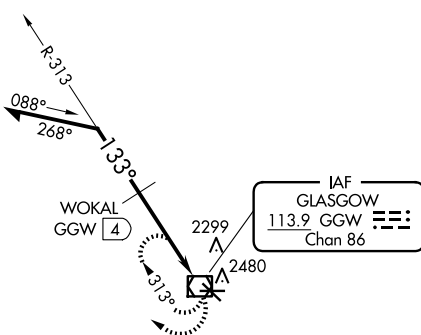
VOR RWY 12
WOKAL FLD/GLASGOW-VALLEY COUNTY (GGW)

When local altimeter setting not received, use Wolf Point altimeter setting and increase all MDA's 160 feet and increase S-12 and Circling visibility Cats B/D $\frac{1}{4}$ SM, Cat C $\frac{1}{2}$ SM and WOKAL fix minimums increase all MDA's 160 feet and increase visibility S-12 Cats C/D $\frac{1}{8}$ SM, and Circling Cat C $\frac{1}{4}$ SM, Cat D $\frac{1}{2}$ SM.

MISSED APPROACH:
Climb to 4100 in GGW
VOR/DME holding pattern.

ASOS
135.175

SALT LAKE CENTER
126.85 305.2

UNICOM
122.8 (CTAF) **L**

Remain within 10 NM

4100

313°

WOKAI

GGW

4

133°

*3140

4 NM

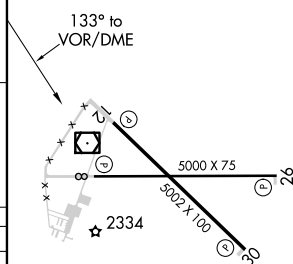
GGW VOR/DME

4100

GGW

*3300 when using Wolf Point altimeter settings

ELEV 2296	D	TDZE 2294
-----------	----------	-----------



CATEGORY	A	B	C	D
S-12	3140-1 846 (900-1)	3140-1¼ 846 (900-1¼)	3140-2½ 846 (900-2½)	3140-2¾ 846 (900-2¾)
CIRCLING	3140-1¼ 844 (900-1¼)		3140-2½ 844 (900-2½)	3140-2¾ 844 (900-2¾)
WOKAL FIX MINIMUMS				
S-12	2700-1 406 (500-1)		2700-1¼ 406 (500-1¼)	
CIRCLING	2780-1 484 (500-1)		2780-1½ 484 (500-1½)	2900-2 604 (700-2)

REIL Rlys 8, 12, 26 and 30 **L**
MIRL Rlys 8-26 and 12-30 **L**