

WAAS CH 99620 W30A	APP CRS 303°	Rwy Idg TDZE 2294 Apt Elev 2296
--	------------------------	---

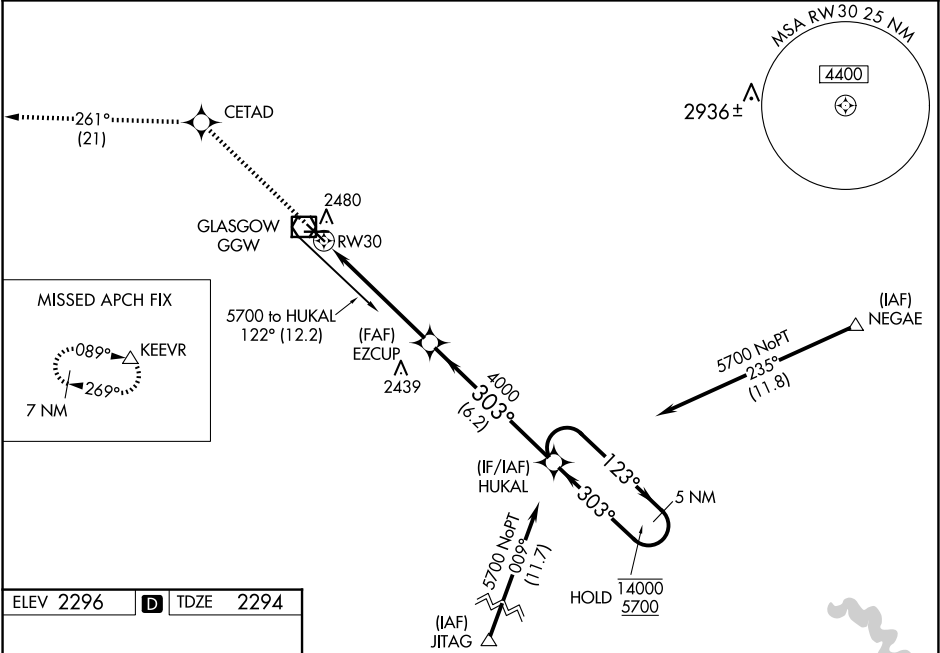
RNAV (GPS) RWY 30
WOKAL FLD/GLASGOW-VALLEY COUNTY (GGW)

RNP APCH.

⚠ For uncompensated Baro-VNAV systems, LNAV-VNAV NA below -14°C or above 54°C. When local altimeter setting not received, use Wolf Point altimeter setting and increase LPV DA to 2635 feet and all visibilities ¾ SM; increase LNAV/VNAV DA to 2728 feet and all visibilities ½ SM; increase all MDAs 160 feet and LNAV Cats C/D and Circling Cat D visibility ½ SM, Circling Cat C ¼ SM. Baro-VNAV and VDP NA when using Wolf Point altimeter setting.

MISSED APPROACH:
Climb to 6500 direct CETAD and on track 261° to KEEVR and hold.

ASOS 135.175	SALT LAKE CENTER 126.85 305.2	UNICOM 122.8 (CTAF) 0
------------------------	---	---------------------------------



ELEV 2296	D	TDZE 2294
-----------	----------	-----------

REIL Rwy 8, 12, 26 and 30 **0**
MIRL Rwy 8-26 and 12-30 **0**

GLASGOW, MONTANA
Orig-C 15JUL21

WOKAL FLD/GLASGOW-VALLEY COUNTY (GGW)
48°13'N-106°37'W

RNAV (GPS) RWY 30

5 NM Holding Pattern
HUKAL
123°
303°
14000
5700
GP 3.00°
TCH 40

*** LNAV only**
RW30
EZCUP 4000
1.2 NM to RW30
1.2 NM
4.1 NM
6.2 NM

CATEGORY	A	B	C	D
LPV DA	2494-¾ 200 (200-¾)			
LNAV/VNAV DA	2587-1 293 (300-1)			
LNAV MDA	2700-1	406 (500-1)	2700-1½	406 (500-1½)
CIRCLING	2780-1	484 (500-1)	2780-1½	2900-2 604 (700-2)

NW-1, 07 AUG 2025 to 04 SEP 2025

NW-1, 07 AUG 2025 to 04 SEP 2025