

WAAS CH 86340 W03A	APP CRS 030°	Rwy Ldg TDZE 6556 Apt Elev 6609
--	------------------------	---

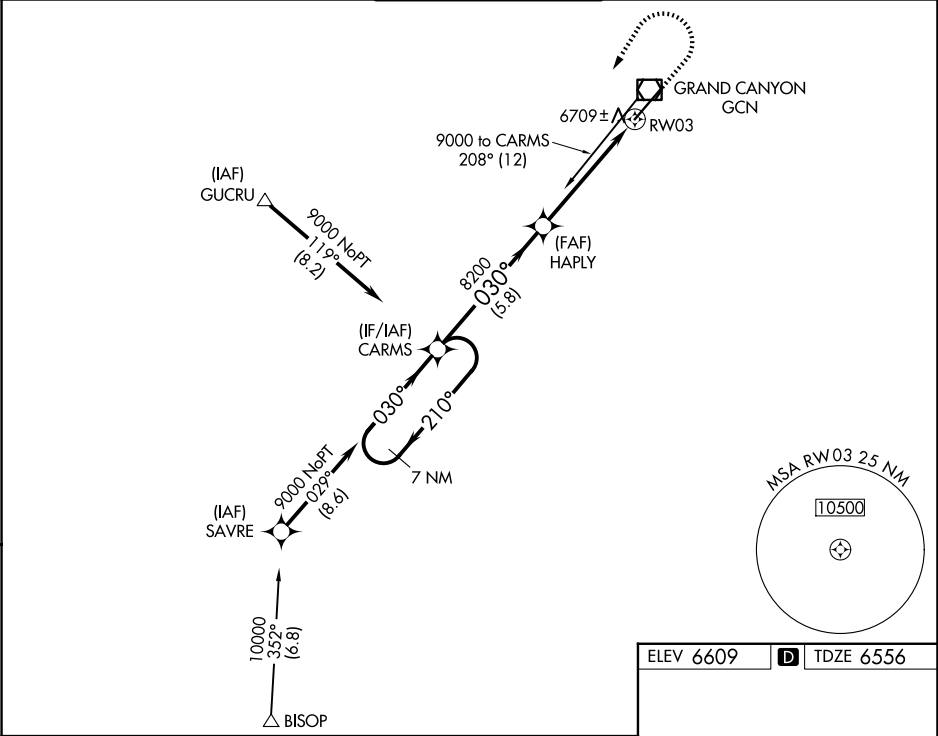
RNAV (GPS) RWY 3

GRAND CANYON NTL PARK (GCN)

For uncompensated Baro-VNAV systems, LNAV/VNAV NA below -12°C (11°F) or above 44°C (111°F).
DME/DME RNP-0.3 NA.

MISSED APPROACH: Climb to 7000 then climbing left turn to 9000 direct CARMS and hold.

ATIS 124.3	LOS ANGELES CENTER 124.85 319.2	CANYON TOWER ★ 119.0 (CTAF) 0	GND CON 121.9	UNICOM 122.95
----------------------	---	---	-------------------------	-------------------------



7 NM Holding Pattern

CARMS

HAPLY

7000

9000

CARMS

9000 ← 210°

030° →

030°

8200

* 1.2 NM to RW03

* LNAV only

GP 3.00°

TCH 58

5.8 NM

3.9 NM

1.2 NM

CATEGORY	A	B	C	D
LPV DA		6797-3/4	241 (200-3/4)	
LNAV/VNAV DA		6981-1½	425 (400-1½)	
LNAV MDA	6960-1	404 (400-1)	6960-1½	404 (400-1½)
CIRCLING	7140-1¼ 531 (600-1¼)	7200-1½ 591 (600-1½)	7280-3 671 (700-3)	7620-3 1011 (1100-3)

