

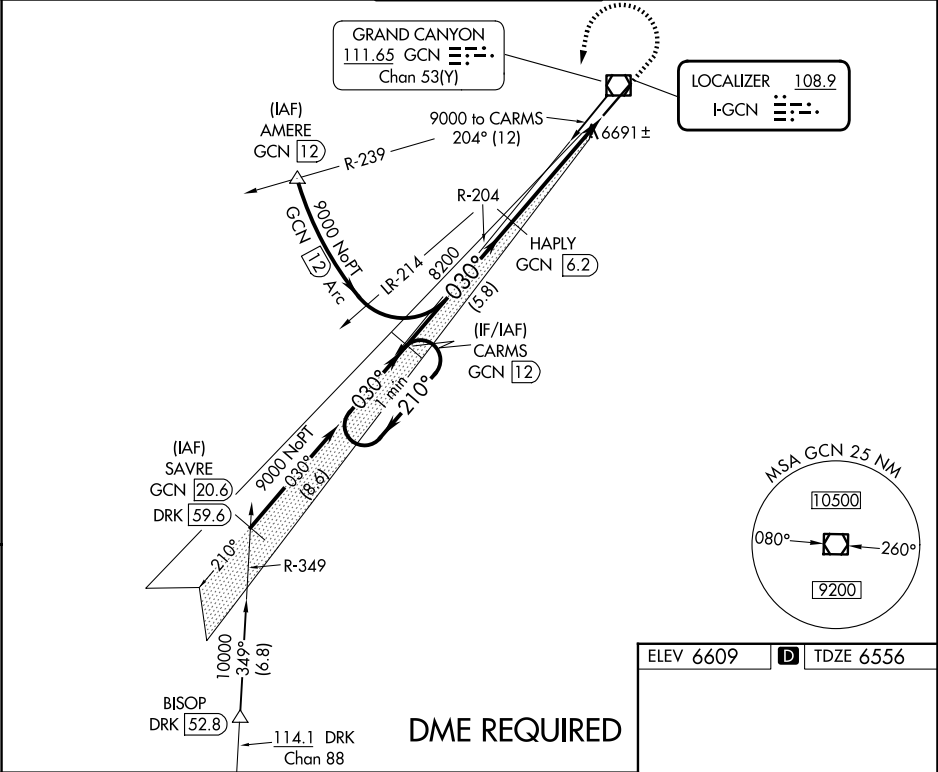
LOC I-GCN <b>108.9</b>	APP CRS <b>030°</b>	Rwy Ldg TDZE Apt Elev
		<b>8999</b> <b>6556</b> <b>6609</b>

ILS or LOC RWY 3

GRAND CANYON NTL PARK (GCN)

<div><div></div><div></div></div> <div>DME from GCN VOR/DME. Simultaneous reception of I-GCN and GCN DME required. DME required.</div>	MISSED APPROACH: Climb to 7000 then climbing left turn to 9000 on heading 180° and on GCN VOR/DME R-204 direct CARMS/GCN 12 DME and hold.
--	---

ATIS <b>124.3</b>	LOS ANGELES CENTER <b>124.85 319.2</b>	CANYON TOWER★ <b>119.0 (CTAF) 0</b>	GND CON <b>121.9</b>	UNICOM <b>122.95</b>
----------------------	---	--	-------------------------	-------------------------



DME REQUIRED				
<div>One Minute Holding Pattern</div> <div>9000 ← 210° / 030° →</div> <div>GS 3.00° TCH 58</div> <div>5.8 NM    3.9 NM    1.2 NM</div>				
CATEGORY	A	B	C	D
S-ILS 3	6795-¾ 239 (200-¾)			
S-LOC 3	6960-1	404 (400-1)	6960-1⅛	404 (400-1⅛)
CIRCLING	7140-1 531 (600-1)	7200-1 591 (600-1)	7280-2 671 (700-2)	7620-3 1011 (1100-3)

