

VOR/DME FFM  
**110.4**  
Chan **41**

APP CRS  
**115°**

Rwy Ldg  
TDZE **1182**  
Apt Elev **1183**

VOR RWY 13

FERGUS FALLS MUNI/EINAR MICKELSON FLD (FFM)

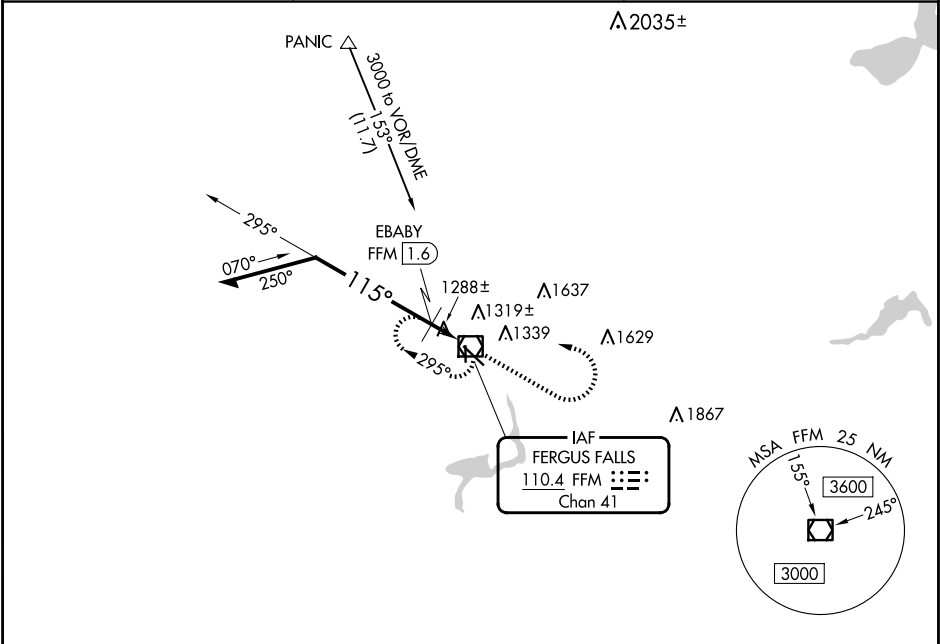
▼

▲ NA

When local altimeter setting not received, use Elbow Lake altimeter setting and increase all MDAs 60 feet; increase Circling Cat C/D visibility ¼ SM. EBABY fix minimums increase S-13 Cat C/D and Circling Cat C/D visibility ¼ SM.

MISSED APPROACH: Climb to 3000 then left turn direct FFM VOR/DME and hold.

AWOS-3PT <b>119.05</b>	MINNEAPOLIS CENTER <b>126.1 269.2</b>	UNICOM <b>122.8</b> (CTAF) <b>0</b>
---------------------------	------------------------------------------	----------------------------------------



ELEV 1183

TDZE 1182

VGSI and descent angles not coincident (VGSI Angle 3.00/TCH 52).

Remain within 10 NM

2900

295°

115°

EBABY FFM 1.6

2.75°

TCH 50

\*1640

1.6 NM

3000

VOR/DME

FFM

\*1700 when using Elbow Lake altimeter setting.

CATEGORY	A	B	C	D
S-13	1640-1	458 (500-1)	1640-1 <sup>3</sup> / <sub>8</sub>	458 (500-1 <sup>3</sup> / <sub>8</sub> )
CIRCLING	1640-1 457 (500-1)	1740-1 557 (600-1)	1820-1 <sup>3</sup> / <sub>4</sub> 637 (700-1 <sup>3</sup> / <sub>4</sub> )	1940-2 <sup>1</sup> / <sub>2</sub> 757 (800-2 <sup>1</sup> / <sub>2</sub> )
EBABY FIX MINIMUMS				
S-13	1580-1	398 (400-1)	1580-1 <sup>1</sup> / <sub>8</sub>	398 (400-1 <sup>1</sup> / <sub>8</sub> )
CIRCLING	1640-1 457 (500-1)	1740-1 557 (600-1)	1820-1 <sup>3</sup> / <sub>4</sub> 637 (700-1 <sup>3</sup> / <sub>4</sub> )	1940-2 <sup>1</sup> / <sub>2</sub> 757 (800-2 <sup>1</sup> / <sub>2</sub> )

REIL Rwy 13 and 35 **0**

MRL Rwy 13-31 and 17-35 **0**