

WAAS CH <b>65920</b> <b>W13A</b>	APP CRS <b>128°</b>	Rwy Ldg <b>5639</b> TDZE <b>1182</b> Apt Elev <b>1183</b>
--	------------------------	---

RNAV (GPS) RWY 13

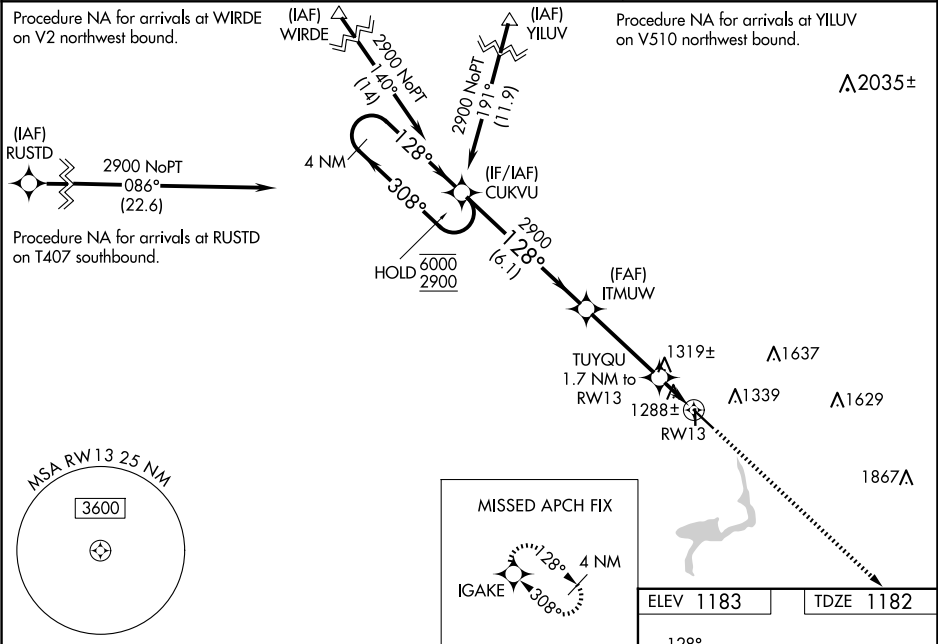
FERGUS FALLS MUNI/EINAR MICKELSON FLD (FFM)

RNP APCH - GPS.

For uncompensated Baro-VNAV systems, LNAV/VNAV NA below -17°C or above 54°C.  
When local altimeter setting not received, use Elbow Lake altimeter setting and increase LPV DA to 1428 feet, increase LNAV/VNAV DA to 1516 feet and all visibilities ½ SM;  
increase all MDAs 60 feet and LNAV Cat C/D and Circling Cat C/D visibility ½ SM.  
Baro-VNAV and VDP NA when using Elbow Lake altimeter setting.

MISSED APPROACH:  
Climb to 2900 direct  
IGAKE and hold.

AWOS-3PT <b>119.05</b>	MINNEAPOLIS CENTER <b>126.1 269.2</b>	UNICOM <b>122.8 (CTAF) 0</b>
---------------------------	--	---------------------------------



VGSI and RNAV glidepath not coincident (VGSI Angle 3.00/TCH 52).				
<div>4 NM Holding Pattern</div> <div>CUKVU</div> <div>ITMUW</div> <div>TUYQU 1.7 NM to RW13</div> <div>128°</div> <div>308°</div> <div>6000 2900</div> <div>GP 3.00° TCH 40</div> <div>1760</div> <div>1.1 NM to RW13</div> <div>0.6</div> <div>1.1 NM</div> <div>IGAKE</div> <div>2900</div> <div>128°</div> <div>35</div> <div>3299 X 75</div> <div>0.7% GP</div> <div>3539 X 100</div>				
CATEGORY	A	B	C	D
LPV DA	1382-¾ 200 (200-¾)			
LNAV/VNAV DA	1470-⅞ 288 (300-⅞)			
LNAV MDA	1580-1 398 (400-1)	1580-1⅛ 398 (400-1⅛)		
CIRCLING	1640-1 457 (500-1)	1740-1 557 (600-1)	1820-1¾ 637 (700-1¾)	1940-2½ 757 (800-2½)
REIL Rwy 13 and 35 0 MIRL Rwy 13-31 and 17-35 0				