

WAAS CH <b>65904</b> <b>W22A</b>	APP CRS <b>217°</b>	Rwy Ldg TDZE <b>743</b> Apt Elev <b>755</b>	<b>6801</b>
--	------------------------	---	-------------

RNAV (GPS) RWY 22

SHEBOYGAN COUNTY MEML INTL (SBM)

RNP APCH - GPS.

▼

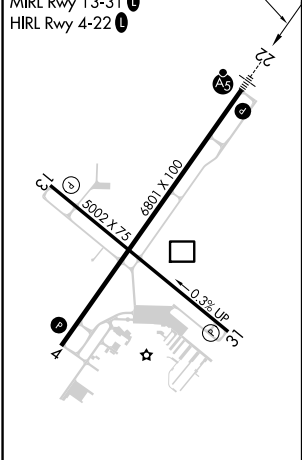
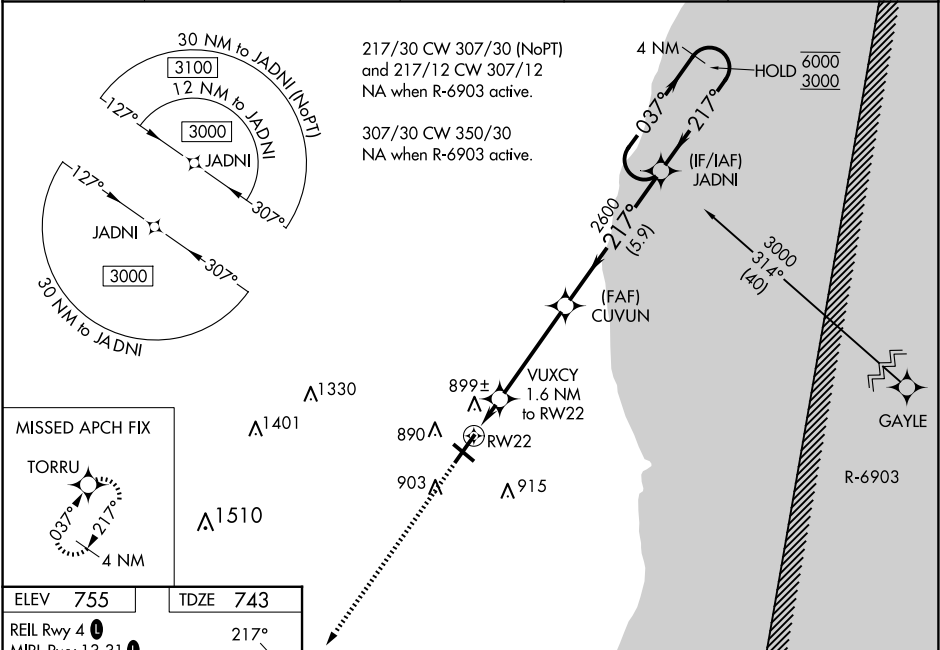
▲

For uncompensated Baro-VNAV systems, LNAV/VNAV NA below -19°C or above 54°C. For inop ALS, increase LNAV/Cats C and D visibility to 1½ SM.

MALSR

MISSED APPROACH: Climb to 3000 direct TORRU and hold.

ASOS <b>118.425</b>	MILWAUKEE APP CON <b>127.375 263.075</b>	GCO <b>121.725</b>	CLNC DEL <b>127.375</b>	UNICOM <b>122.7 (CTAF) 0</b>
------------------------	---	-----------------------	----------------------------	---------------------------------



ELEV 755	TDZE 743	217°			
REIL Rwy 4	MIRL Rwy 13-31	HIRL Rwy 4-22			
TORRU			4 NM Holding Pattern		JADNI
VUXCY 1.6 NM to RW22			CUVUN 2600		JADNI 217° 6000 3000
RW22			1300 2600		GP 3.00° TCH 50
1.6 NM 4.1 NM 5.9 NM					
CATEGORY	A	B	C	D	
LPV DA	943-½ 200 (200-½)				
LNAV/VNAV DA	1188-¾ 445 (500-¾)				
LNAV MDA	1160-½ 417 (500-½)		1160-¾ 417 (500-¾)		
CIRCLING	1200-1 445 (500-1)	1240-1 485 (500-1)	1340-1½ 585 (600-1½)	1360-2 605 (700-2)	

EC-3, 07 AUG 2025 to 04 SEP 2025

EC-3, 07 AUG 2025 to 04 SEP 2025