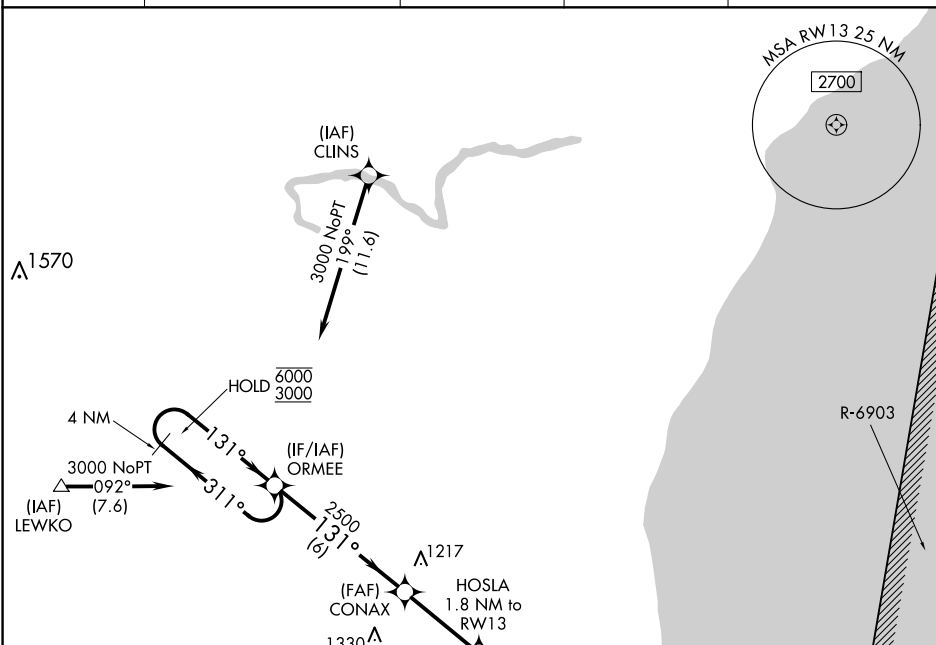


RNAV (GPS) RWY 13  
SHEBOYGAN COUNTY MEML INTL (SBM)

**T**  
**A** Rwy 13 helicopter visibility reduction below  $\frac{3}{4}$  SM NA.

**MISSED APPROACH:** Climbing right turn to 3000 direct ORMEE and hold.

UNICOM  
122.7 (CTAF) **L**

EC-3, 07 AUG 2025 to 04 SEP 2025

