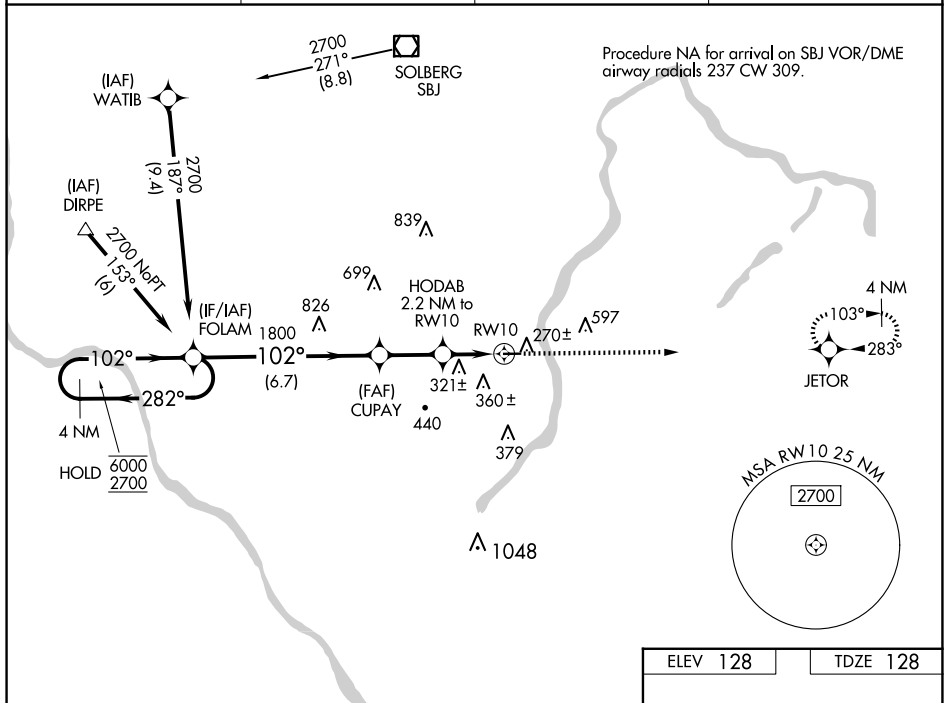


RNAV (GPS) RWY 10
PRINCETON (39N)

T Rwy 10 helicopter visibility reduction below $\frac{3}{4}$ SM NA. Circling Rwy 28 NA at night.
A NA Baro-VNAV NA. Use Trenton altimeter setting.

MISSED APPROACH:
Climb to 2700 direct
JETOR and hold.

TTN ASOS 126.775	NEWARK APP CON 132.8 379.9	UNICOM 122.725 (CTAF)	123.05 0
----------------------------	--------------------------------------	---------------------------------	-----------------



NE-2, 07 AUG 2025 to 04 SEP 2025

4 NM Holding Pattern

VGSI and descent angles not coincident (VGSI Angle 3.45/TCH 42).

2700 ↑ JETOR

*RNAV only.

6000 ← 282°
2700 → 102°

GP 3.45°
TCH 51

FOLAM

CUPAY 1800

HODAB 2.2 NM to RW10

1800

*960

RW10

6.7 NM

2.3 NM

2.2 NM

3499 X 75

102°

CATEGORY	A	B	C	D
LPV DA	441-1 313 (400-1)			
RNAV/ VNAV DA	533-1½ 405 (500-1½)			
RNAV MDA	580-1 452 (500-1)		580-1¾ 452 (500-1¾)	
C CIRCLING	760-1 632 (700-1)	840-1 712 (800-1)	940-2½ 812 (900-2½)	1000-2¾ 872 (900-2¾)

MIRL Rwy 10-28 **L**
REIL Rwy 10 **L**