

| | | | |
|--|------------------------|-----------------------------|---|
| WAAS CH 97427 W09A | APP CRS 096° | Rwy Idg TDZE Apt Elev | 6579 1321 1328 |
|--|------------------------|-----------------------------|---|

RNAV (GPS) RWY 9

GAYLORD RGNL (GLR)

RNP APCH - GPS.

▼

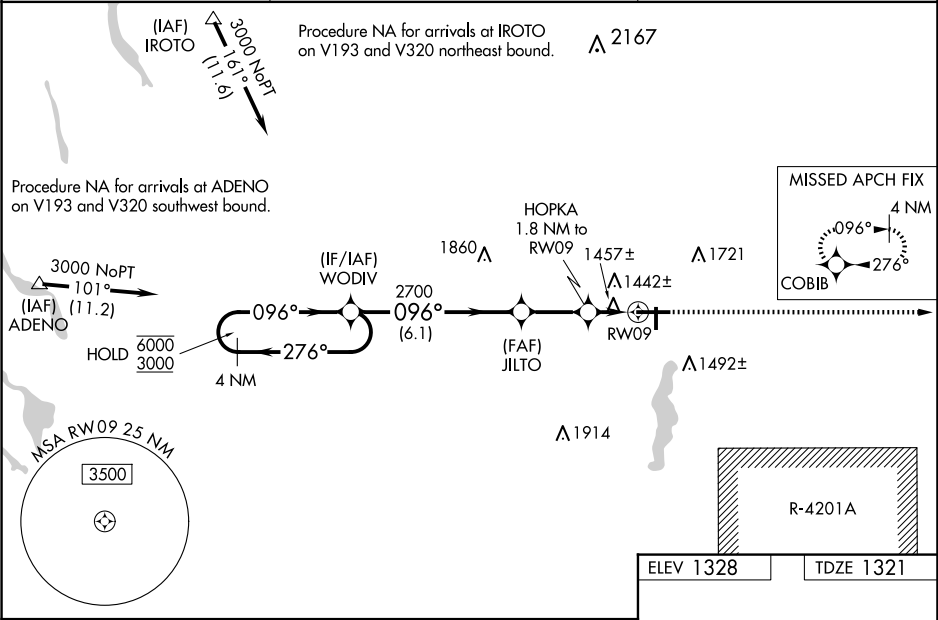
▲

Circling Rwy 18, 36 NA at night. Baro-VNAV and VDP NA when using GOV altimeter setting. For uncompensated Baro-VNAV systems, LNAV/VNAV NA below -21° C or above 54° C. Inoperative table does not apply to LPV. When local altimeter setting not received, use GOV altimeter setting: increase LPV DA to 1591 feet; increase LNAV/VNAV DA to 1790 feet and all visibilities ¼ SM; increase all MDAs 80 feet and LNAV and Circling visibility Cats C and D ¼ SM. For inoperative ALS when using GOV altimeter setting, increase LNAV/VNAV visibility all Cats to 1 ½ SM and LNAV visibility Cats C and D to 1 ½ SM.

MALSR

MISSED APPROACH:
Climb to 3100 direct
COBIB and hold.

| | | |
|------------------------|---|---------------------------------|
| ASOS 118.375 | MINNEAPOLIS CENTER 134.6 354.05 | UNICOM 122.8 (CTAF) 0 |
|------------------------|---|---------------------------------|



4 NM Holding Pattern

VGSI and RNAV glidepath not coincident (VGSI Angle 3.00/TCH 38).

3100 COBIB

WODIV

6000 3000 276° 096°

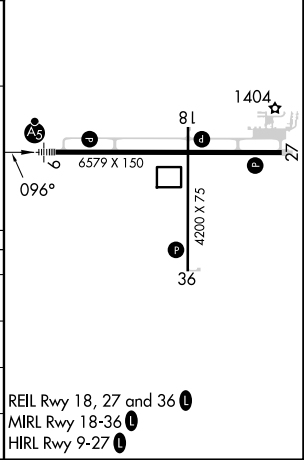
GP 3.00° TCH 49

JILTO 2700 1940

HOPKA 1.8 NM to RW09 1.1 NM to RW09

6.1 NM 2.4 NM 0.7 1.1

| CATEGORY | A | B | C | D |
|--------------|-----------------------|-----------------------|-----------------------|-------------------------|
| LPV DA | 1521-¾ 200 (200-¾) | | | |
| LNAV/VNAV DA | 1720-¾ 399 (400-¾) | | | |
| LNAV MDA | 1720-¾ 399 (400-¾) | | | |
| CIRCLING | 1840-1 512 (600-1) | 1940-1 612 (700-1) | 2040-2 712 (800-2) | 2080-2½ 752 (800-2½) |



EC-1, 07 AUG 2025 to 04 SEP 2025

EC-1, 07 AUG 2025 to 04 SEP 2025